

GARTER LANE ARTS CENTRE IN ASSOCIATION WITH KEVIN O'SHEA PRESENTS

BRIGHTON

A NEW PLAY BY
JIM NOLAN



GARTER LANE THEATRE, WATERFORD
MAY 2010

Gary Wyse

CLASSIC CARPETS

63 O'Connell Street, Waterford

Now open
in new larger premises
at 63 O'Connell Street .

- *Locally owned for over 20 years*
- *Commercial & domestic customers welcome*
- *Highly experienced carpet fitters*
- *All timber fitted by qualified carpenters*
- *Low prices guaranteed*
- *Come see our large selection of carpets, vinyl's, solid, semi solid, and laminate flooring.*
- *Waterford's largest selection of Rugs*



FOR FREE MEASURING AND QUOTATION PHONE 051 870789

Full house package price available, Deposit Secures



Welcome to Brighton by Jim Nolan

It only seems a few short months ago that we celebrated the reopening of the refurbished theatre at Garter Lane with the wonderful production of Jim Nolan's *Salvage Shop* in 2006, and we now have another wonderful night of theatre to enjoy.

Jim Nolan has done what he does best – written a play that speaks to us all, and reminds us all of ourselves or those that we love. Garter Lane Arts Centre is very grateful to the Arts Council for funding the commissioning of Brighton and also to the Arts Office, Waterford City Council who provided a travel grant to enable Jim to go to England for research.

Having written a superb piece of theatre, the next step was to find a way to bring the play from the page to the stage, and we must again say an enormous thank you for the support of Kevin O'Shea without whom this evening's performance simply would not be happening.

We have assembled an amazing cast and creative team, led by Ben Barnes, who has had a twenty-year professional relationship with Jim, and in Brighton is directing the fifth world premiere of his work.

Thank you to all the staff of Garter Lane Arts Centre for an extraordinary group effort to ensure that every aspect of this evening's performance is memorable and enjoyable.

We are grateful to our principal funders, the Arts Council, Waterford City Council and Fás, who enable us to continue to give a great service to the people of Waterford and beyond.

Thank you finally to you, our loyal audience, who come again and again to Garter Lane to be captivated and enjoy all that we have to offer. Please tell your friends and family to come and see Brighton – they are assured of a great night's entertainment and great memories to take home, and please come soon again to Garter Lane – we love having your company.

Anne Harpur

Chairperson, Garter Lane Arts Centre



JIM NOLAN

Jim Nolan is a founder member and former Artistic Director of Red Kettle Theatre Company. His plays, including Moonshine, The Guernica Hotel, The Salvage Shop, Blackwater Angel and Sky Road, have been presented throughout Ireland, in the United Kingdom, the United States and Canada. He has also written two plays for children, Dear Kenny and The Road to Carne.

He has directed over twenty plays for Red Kettle and has also worked as a writer and director with Meridian, Field Day, TEAM, Rough Magic, Barnstorm and the Abbey Theatre.

Jim was Writer in Residence at the Abbey Theatre for 2001-2002 and is a member of Aosdana. His plays, including Brighton, are published by Gallery Press.

For radio, Jim has directed a number of plays for WLRfm and has also worked as a writer and producer on the drama documentary, The Missing Postman; as director of In My Father's House, (adapted from the book of the same name by Sean Dunne and winner of the 2004 PPI Award for Best Radio Drama); and, most recently, as writer and co-producer of The Glass, a series of six one hour documentaries on the history of Waterford Crystal.



Photo: Gerry O'Carroll

An Emigrant's Tale

The complete Irish Show, now enters its 5th year at Dooley's Hotel, Waterford and has been extended to now play Tuesday and Thursday Nights. Tuesday 18th May 2010 see's this year's run of the show begin and it plays right through the summer season until Thursday 16th September 2010.

This Martin Murray devised show is a very entertaining production with top class musicians, excellent dancers and vocalists. An entertaining quality programme that is heartfelt, homely, honest and historical, this show touches hearts, stirs memory into tenderness as it tells a story of emigration that is different.

Special Offer of Dinner and Show for €32.00
Show Only €15.00
Under 12's and group discount also available.

GILLIAN HANNA, LILY

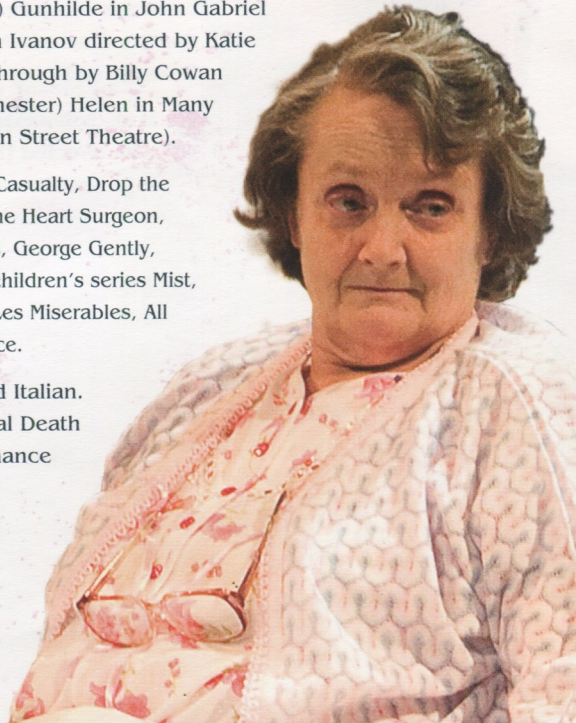


Gillian Hanna started her professional career with Project 67 at the Gate Theatre, Dublin playing Mrs Sullen in the Beaux' Stratagem directed by Jim Fitzgerald. She was a regular in the RTE comedy series It's Too Late We're On. After moving to England she worked at the Liverpool Everyman before joining the touring companies 7:84 and Belt and Braces. In 1975 she was a founder member of The Monstrous Regiment, the feminist company with which she worked extensively for fifteen years. Her book about the company, Monstrous Regiment: A Collective Celebration is published by Nick Hern Books.

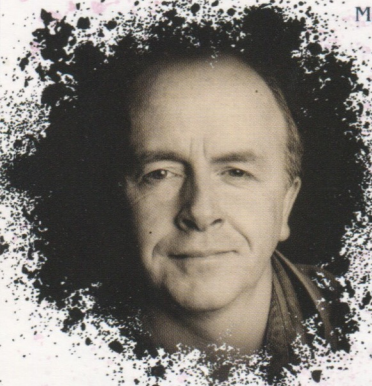
Other work includes: Duet for One and Martha in Who's Afraid of Virginia Woolf (Sheffield Crucible) Mrs. Lovett in Sondheim's Sweeney Todd (Liverpool Playhouse Watford Palace and Half Moon, London) One-woman show by Franca Rame and Dario Fo, A Common Woman (Sheffield Crucible & Half Moon London, 1989 Time Out Best Actress) Juno in Juno and the Paycock (Contact Theatre, Manchester 1992 Manchester Evening News Best Actress) Nurse in Romeo and Juliet; Beatrice in A View from the Bridge (Royal Exchange Manchester 1993 TMA/Martini Regional Awards, Best Actress), Maggie in John B. Keane's Big Maggie (Birmingham Rep). The Queen Mother in Sue Townsend's The Queen and I (Royal Court and Vaudeville, London), Phoebe Rice in The Entertainer (Birmingham Rep and West Yorkshire Playhouse), Auntie Annie in East is East by Ayub Khan-Din (Stratford East and the Duke of Yorks), Chorus in Medea directed by Deborah Warner (Queen's Theatre London) The Mother in Nightsongs by Jon Fosse directed by Katie Mitchell (Royal Court) Gunhilde in John Gabriel Borkman (English Touring Theatre) Zinaida in Ivanov directed by Katie Mitchell (National Theatre) Peggy in Smilin' Through by Billy Cowan (Birmingham Rep and Contact Theatre Manchester) Helen in Many Roads to Paradise by Stewart Permutt (Jermyn Street Theatre).

Television includes: The Story of Philip Knight, Casualty, Drop the Dead Donkey, Desmond's, Poirot, Brookside, The Heart Surgeon, Dangerfield, Doctors, The Kindness of Strangers, George Gently, Married Single Other. The voice of Swift in the children's series Mist, the Story of a Sheepdog Puppy. Films include: Les Miserables, All the Queen's Men. Polanski's Oliver Twist, Mr Nice.

Gillian also translates plays from French and Italian. Those published by Methuen are: Accidental Death of an Anarchist and Elizabeth: Almost by Chance a Woman (Dario Fo); A Woman Alone (one woman plays by Franca Rame and Dario Fo) Le Renard du Nord by Noelle Renaude. Her translation of Pasolini's Affabulazione will be produced in London in June 2010.



MARK LAMBERT, JACK



Mark Lambert was born and reared in Dublin, but with University in Manchester and training at the Bristol Old Vic Theatre School, he began his career in London after some classic British repertory in Oxford, Exeter and Bristol. Since those halcyon days, he has appeared in five West End shows including *The Memory of Water*, the RSC's *All's Well that Ends Well*, *Dancing at Lughnasa*, *Our Country's Good*, and *Juno and the Paycock* for which he received an Olivier nomination. Also worked at the Royal Court, RSC, Hampstead, Almeida, the Bush, the Young Vic etc. During this time he returned every year to perform at the Abbey in *The Gigli Concert*, *Ariel*, *Aristocrats*, *Hamlet*, *Barbaric Comedies*, *School for Scandal* and others. At the Gate Theatre he was in premières of *Molly Sweeney*, *A Month in the Country*, *Spirit of Annie Ross* and also in *The Three Sisters*, *Art*, *Amadeus* and *The Weir* amongst others. He also has had great pleasure in working for *Rough Magic*, *Field Day*, *Ouroboros*, the Irish Theatre Co, *Druid* and *Lyric Theatre*, Belfast.

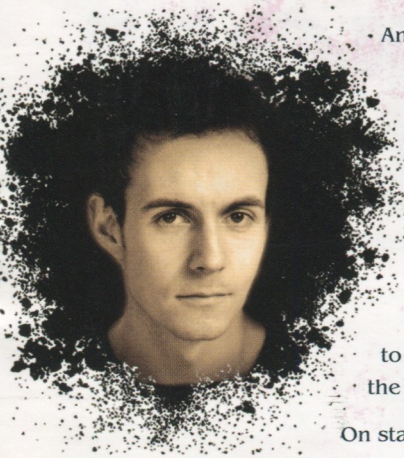
On television, Mark has played murderers in *Cracker*, *A Touch of Frost* and *Dalziel and Pascoe*, soldiers in *Vanity Fair* and *Sharpe's Rifles*, builders in *Casualty*, *The Bill* and *Rosemary & Thyme*, nutters in *Bottom*, *The Young Ones* and *Roy* and various upstanding citizens in *Heartbeat*, *Bloody Sunday*, *No Tears*, *The Tudors* and many more besides. On film he has been in *Veronica Guerin*, *Champions*, *Borstal Boy*, *Evelyn*, *Prayer for the Dying*, *Durango* and others.

Mark is also an associate director of the Abbey Theatre where he directed *Hunt for Red Willie*, *Lovers at Versailles*, *The Memory of Water* and *Doldrum Bay*. He has also directed numerous productions at the Royal Lyceum Edinburgh, *Opera House Belfast*, *Tricycle Theatre London*, *Storytellers* amongst others. Mark has also acted in over a hundred radio plays for the BBC and RTE and recently produced *Wigs on the Green*, a six part series for RTE Lyric FM.

He lives in Greystones with his three children Molly, Daniel and Louis and a dog called Coco that has dark brown curly hair that he bitterly envies.



ANDREW MACKLIN, DAVE



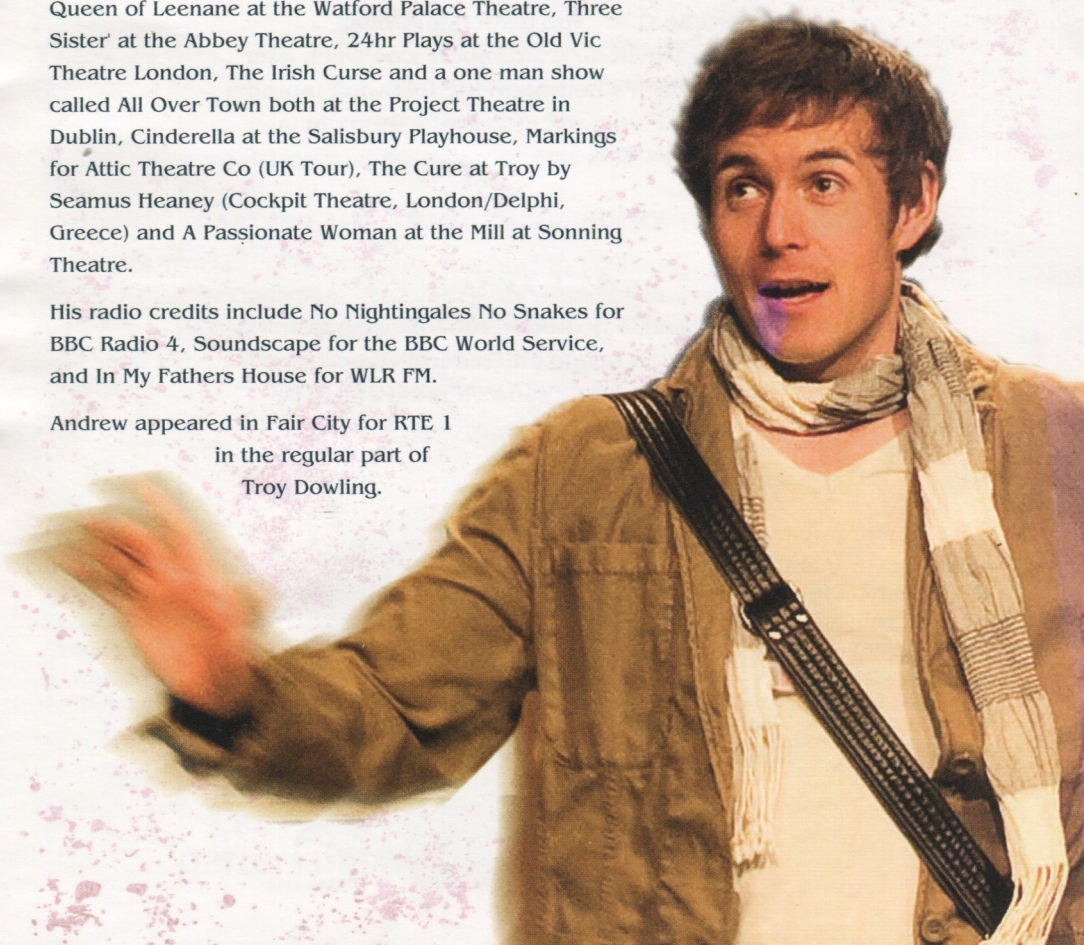
Andrew Macklin is a proud native of Waterford city and is delighted to be returning to Garter Lane Arts Centre after a ten year absence. Andrew was introduced to drama when he joined Waterford Youth Arts at the tender age of fourteen. He performed in numerous WYA productions thereafter and also performed locally with Red Kettle and subsequently with the National Youth Theatre in Dublin before leaving to train at the Bristol Old Vic Theatre School. On leaving drama school Andrew moved to London where he has been based ever since. His professional work to date has spanned theatre, radio and television throughout the UK and Ireland.

On stage he has recently performed in I'll be the Devil for the Royal Shakespeare Company, Much Ado About Nothing for the Peter Hall Company at Bath Theatre Royal, The Beauty

Queen of Leenane at the Watford Palace Theatre, Three Sister' at the Abbey Theatre, 24hr Plays at the Old Vic Theatre London, The Irish Curse and a one man show called All Over Town both at the Project Theatre in Dublin, Cinderella at the Salisbury Playhouse, Markings for Attic Theatre Co (UK Tour), The Cure at Troy by Seamus Heaney (Cockpit Theatre, London/Delphi, Greece) and A Passionate Woman at the Mill at Sonning Theatre.

His radio credits include No Nightingales No Snakes for BBC Radio 4, Soundscape for the BBC World Service, and In My Fathers House for WLR FM.

Andrew appeared in Fair City for RTE 1 in the regular part of Troy Dowling.



GARTER LANE ARTS CENTRE IN ASSOCIATION WITH KEVIN O'SHEA PRESENTS

BRIGHTON

BY JIM NOLAN

Lily - Gillian Hanna
Jack - Mark Lambert
Dave - Andrew Macklin

ACT ONE

The Sisters of Charity Nursing Home, Hammersmith Road, London

Scene One - The garden, morning
Scene Two - The library, afternoon, one week later
Scene Three - Jack's bedroom, the following morning
Scene Four - The library, morning, a fortnight later
Scene Five - Lily's bedroom, evening, a few days later

INTERVAL (15 mins)

ACT TWO

Scene One - Jack's bedroom, the following evening
Scene Two - A private room in **Brighton General Hospital**, a fortnight later
Scene Three - The same, ten days later
Scene Four - The same, two weeks later



Director - Ben Barnes
Set & Costume Designer - Joe Vanek
Lighting Designer - John Comiskey
Sound & Projection Designer - Mark Graham
Production Manager - Sile Penkert
Stage Manager - Elizabeth Howard
ASM & Wardrobe Mistress - Clair Walsh
Hair & Makeup - Mary Coppinger
Stage Hand - Lisa Walsh
Stage Hand - James Power
Technical Manager - Steve Neale
Sound Technician - Ian White
LX Technician - Paul Browne & Richard Collins
Set Painter - Valerie Stone
Set Construction - Podium
Casting Agent (UK) - Siobhan Bracke
Executive Producer - Kevin O'Shea
Executive Producer - Caroline Senior
Graphic design - Antidote Design
Photography - Patrick Browne

GARTER LANE ARTS CENTRE WOULD LIKE TO THANK

Des Whelan, Billy McCarthy, Ian Noctor, Liz Reddy, Wayne Brown, WLRfm
Paddy Gallagher, Niall Morrissey & Jackie Power, Waterford Today
Mary Frances Ryan & Deirdre Dalton, Waterford News & Star
Kieran Walsh & John O'Connor, Munster Express
Clem Jacob & Ray O'Sullivan from Clem Hire
Gary Wyse, Classic Carpets
Roger Greene, Waterford Cheshire
Peter Fallon, The Gallery Press
TV Honan, Waterford Spraoi

Pat Moylan, Margaret O'Mahony, Lorne Carson, Eric Vereker, John Grubb, Theatre Royal Waterford, Jamie Murphy (Waterford Arsenal Supporters Club), Ann Johnson, Cliona Penkert, David Green & Finbarr O'Rourke, Waterford Regional Hospital, Head of Catering, WIT, Anne Woodworth, Kathleen Greene, Breda Cashe, Judy Woodworth, Neil McCann, Damien Murphy, Nursing Needs, All at Nomac, Jamie Roche, Rob Furey, Nora Boland, Paddy Dwane, John Hegarty, Frank English, Maurice Kavanagh, Wayne from PDMS, Cristian from La Taverna

Brighton was first published simultaneously in paperback and in a clothbound edition on the day of its première, 1 May 2010 by The Gallery Press.



Fly to Birmingham, London Luton & Manchester

FLIGHTS
TO LORIENT
START ON
29TH MAY

from Waterford

from
€39
one way incl taxes

www.AerArann.com

AerArann

Subject to availability. Terms and Conditions apply. No handling fee will be applied to debit card bookings. A handling fee of €5/€5 will be applied to credit cards for each passenger per flight segment. 15kg free checked in baggage allowance on domestic flights. 20kg baggage allowance on all other routes, €8/€8 fee per bag, per sector if booked online or through the call centre. Hand luggage allowance 7kg per passenger. Excess baggage charged at €7/€7 per kg. Details correct at time of printing 21/04/2010.

A black and white portrait of Ben Barnes, a man with dark curly hair, smiling and resting his head on his hand. The portrait is surrounded by a dark, splattered ink effect.

BEN BARNES

DIRECTOR

Ben Barnes is the Director of the Theatre Royal. He was the founding Artistic Director of the Opera Theatre Company, a Director of Groundwork, Director of the Gaiety Theatre and the Artistic Director of the Abbey Theatre from 2000-2005. He has directed some one hundred and twenty productions in Ireland and abroad and his work, which has won numerous awards, has been seen in most of the major cities of the world including London, New York, Moscow, St Petersburg, Sydney, Adelaide, Tokyo, Chicago, Toronto, Montreal, Barcelona, Prague and Budapest. Recent directing credits include *The Seafarer*, *The Cherry Orchard*, *Endgame*, *A Month in the Country* and *Translations* all in the USA, *The Importance of Being Earnest* and *The Cripple of Inishmaan* in Canada. He is the author of *Plays and Controversies: Abbey Theatre Diaries 2000-2005* published in 2008. This is Ben's fifth collaboration with the writer, Jim Nolan having previously directed the first productions of *Moonshine* (1991), *The Salvage Shop* (1998), *Blackwater Angel* (2001) and *Sky Road* (2007).

A black and white portrait of Joe Vanek, a man with glasses and a beard, looking directly at the camera. The portrait is surrounded by a dark, splattered ink effect.

JOE VANEK

SET & COSTUME DESIGNER

Joe Vanek has been designing new plays by Irish playwrights for the past 25 years, and in the late autumn of this year his book *Irish Theatrescapes* is due for publication by Carysfort Press. He is closely associated with the recent plays of Brian Friel and especially the Internationally successful and awarded *Dancing at Lughnasa*. He has also designed new plays by Frank McGuinness, Tom Kilroy, Tom MacIntyre and Hugh Leonard together with recent plays by Marina Carr and Tom Murphy. From 1994-97 he was Director of Design for the Abbey Theatre and for the 2006, 2007 and 2008 Seasons at the Wexford Festival Opera was Design Associate, designing two productions, *Transformations* and *The Mines of Sulphur* which both won Irish Times Best Opera Awards.



*Marquee & Furniture
for all occasions!*

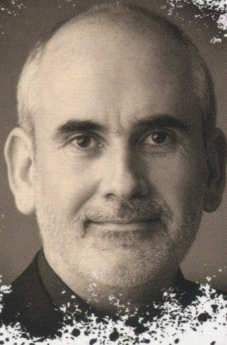


Clem Jacob Hire

Unit 10G, Six Crossroads Business Park, Waterford

Telephone: 051 -373333 Fax: 051 - 373567

Email: carmel.jacob@clemhire.com



JOHN COMISKEY **LIGHTING DESIGNER**

John's recent theatre work includes set, lighting and video for *Sodome, My Love* (Rough Magic) and *Hamlet* (Peacock); set and lighting for *Copenhagen*; (Rough Magic) *Hanging On By a Thread*; *Mermaids*; (CoisCeim Dance) and lighting design for *Solemn Mass* (Rough Magic); *The Sanctuary Lamp* (B*spoke); *Moriarty* (Siamsa Tire); *Out of Harm's Way*; *Dodgems* (CoisCeim Dance); and the ambient lighting for James Coleman's installations in 2009. He was curator and designer in the Prague Quadrennial in 2007. John's work as director includes *The Frost is All Over* (ten42 productions); and Gavin Friday's *Ich Liebe Dich* (Dublin Theatre Festival) and two years as production director worldwide of *Riverdance-The Show* (Abhann Productions). Film work (as director) includes *Hit and Run* (Sackville Films) and documentaries on *The Wren's Day* and *The Berlin of Agnes Bernelle*. Filmed concerts include *Celtic Woman* and *Brian Kennedy Live in Belfast*. Television director credits include *The Eurovision Song Contest 1995*; *Nighthawks*; *The Blackbird and the Bell*. He was Creative Director for *Dustin the Turkey* at the Eurovision Song Contest 2008.

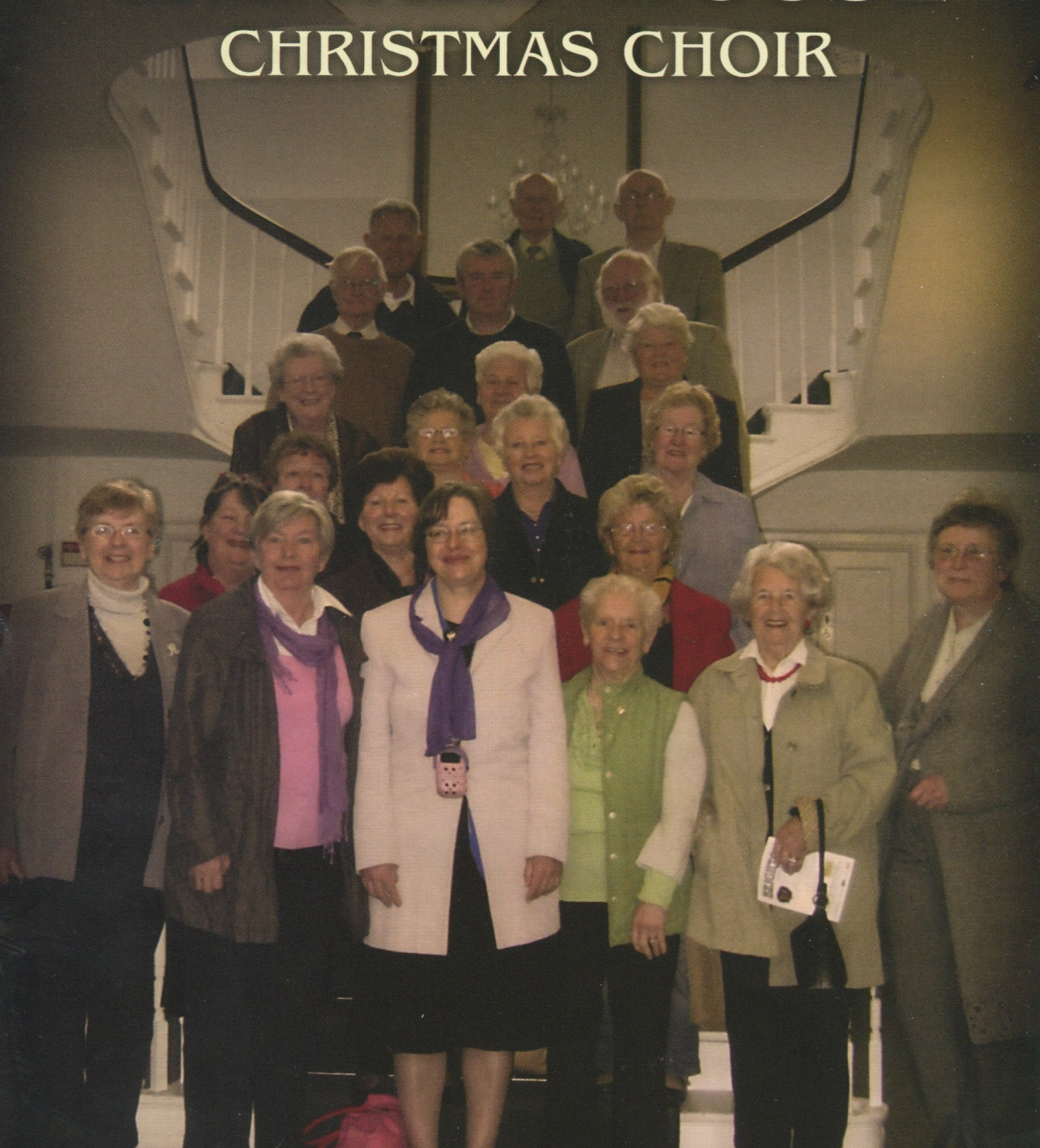


MARK GRAHAM **SOUND & PROJECTION DESIGNER**

Mark began playing with bands in Waterford in his teens, which continued during his undergraduate studies of Computer Science in Galway RTC. His two main interests came together in his study for an MA in Music and Media Technology in Trinity College Dublin, from which he graduated in 2008. Mark has studied Tabla in India with Mata Prasad Mishra, has worked twice in Jamaica on a recording studio project with the State University of New York and most recently he travelled to Ethiopia with a group of Waterford musicians at the invitation of the Irish Embassy. Locally he has worked with *Animated State*, *Waterford Youth Arts*, *Little Red Kettle*, *Spraoi* and *WLRfm*. Over the years he has played with many Waterford bands (including *Popasnoc*, *King Kong Company* and *Skunk*). In 2008 Mark was responsible for the first surround sound broadcast on the new DAB radio service in Ireland and this broadcast featured some of his own electro acoustic work. Since 2008 Mark has been living in *Tramore* and he currently works in the Music Department of *Waterford Institute of Technology* as a lecturer in Music Technology.

CALVARY HOUSE

CHRISTMAS CHOIR



Bernie Collins, Rita Flynn, Bridget Whelan, Teresa Bergin, Alice Nolan, Kathleen Kennedy, Emily O'Neill, Máirín de Búrca, Joan Sheedy, Anne Woodworth, Sheila Briscoe, Kathleen Greene, Mavis Lacey, Pat Ormond, Ann Johnson, Kitty Hayes, Paddy Greene, Jim Nolan, Dermot Murray, Leslie Matson, Billy Heylin, Frank Bowe



Take a bow!

The arts really matter to us in Ireland; they are a big part of people's lives, the country's single most popular pursuit. Our artists interpret our past, define who we are today, and imagine our future. We can all take pride in the enormous reputation our artists have earned around the world.

The arts play a vital role in our economy, and smart investment of taxpayers' money in the arts is repaid many times over. The dividends come in the form of a high value, creative economy driven by a flexible, educated, innovative work force, and in a cultural tourism industry worth €2.4 billion directly a year.

The Arts Council is the Irish Government agency for funding and developing the arts. Arts Council funding from the taxpayer, through the Department of Arts, Sport and Tourism, for 2010 is €69.15 million, that's less than €1 a week for every household.

So, at the end of your next great theatre performance, don't forget the role you played and take a bow yourself!

Find out what's on at

www.events.artscouncil.ie

You can find out more about the arts here:

www.artscouncil.ie



**It's the
chat!**

**It's the
craic!**

**It's the
local
news,**

**It's the
music.**

**and
sport
boy!**

**It's
WLRfm,
Ireland's
Local Radio
Station of
The Year.**

ANYTHING ELSE IS CAT MALOJAN

WLR FM
95.1/97.5

First for Waterford!

PPI Local Radio Station of the Year.

www.wlrfm.com