

Edmund Rice Choral and Musical Society

(Affiliated to AIMS)  
present

# Johann Strauss "Die Fledermaus"

New English Version by  
Alaistair Beaton

Book by Phil Park

Permission Granted by  
D'Oyly Carte Opera  
Trust Ltd.



The Theatre Royal, Waterford.  
22nd - 27th November 2004

Director: Vivian Coates Musical Director: Greg Scanlon  
Choreographer: Tara Ann Byrne Co-ordinator: Eamonn Flavin  
With Guests: Kathryn Smith, Philip Salmon, Janice Condon,  
Frank Beadle, Sarah Helsby Hughes.  
Local Stars: Brendan Payne, Tobie Hickey, Stephanie Foley,  
Des Manahan and Paul Dillon

Programme: €2

## Our Society

The Edmund Rice Choral and Musical Society was founded in 1976, as part of the activities of the Mount Sion Past Pupils Union. The P.P.U. members who undertook the task were Bobby O'Leary, Tony Egan (RIP) and Chris Walsh (RIP) who became the First Chairman. The first production was H.M.S. Pinafore, and our present production is the 27th.

We have also developed a choral tradition and have participated in many choral festivals and concerts over the years. We have travelled to Northern Ireland and to Buxton, Derbyshire in England to compete in their Light Opera and Gilbert and Sullivan festivals.

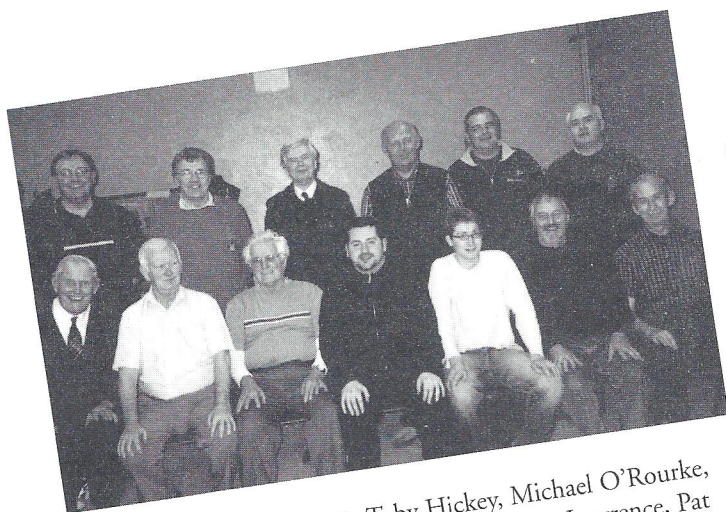
In 1996 our members travelled to Rome to participate in the Beatification ceremonies for Blessed Edmund rice, after who our society is proudly named.

We have won many awards during the past 26 years and look forward to continuing that tradition in the future.

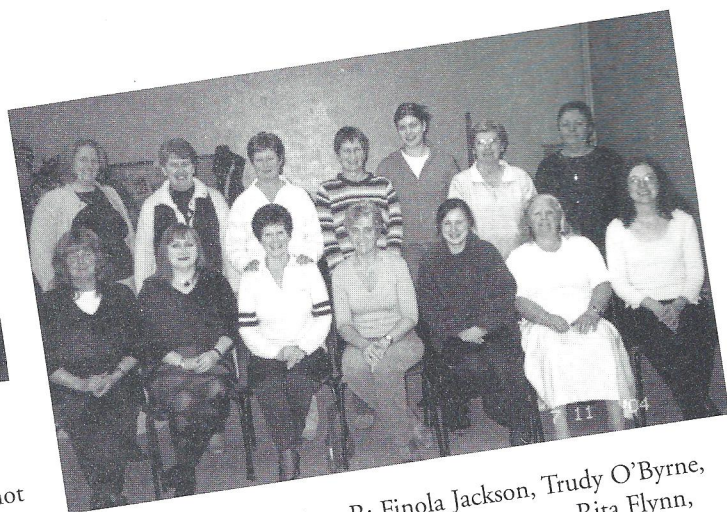
## Past Productions

1977 H.M.S. Pinafore  
1978 The Gypsy Baron  
1980 Calamity Jane  
1981 The Desert Song  
1982 The Merry Widow  
1983 Patience  
1984 Die Fledermaus  
1985 The New Moon  
1986 Fiddler on the Roof  
1987 Oklahoma  
1988 Showboat  
1989 The Arcadians

1991 My Fair Lady  
1992 Annie Get Your Gun  
1993 South Pacific  
1994 The Pirates of Penzance  
1995 Brigadoon  
1996 The Mikado  
1997 Iolanthe  
1998 The Pirates of Penzance  
1999 Showboat  
2000 Maritana  
2001 The Yeomen of the Grand  
2002 The Merry Widow  
2003 Me and My Girl



Male Chorus: Back L to R: Toby Hickey, Michael O'Rourke, John Johnston-Keogh, Mark Plunkett, Martin Lawrence, Pat Carroll, Vincent Kervick, Christy Brophy, John Bond, Dermot Sullivan, Donal Forristal, Peter O'Brien, John Myler



Female Chorus: Back L to R: Finola Jackson, Trudy O'Byrne, Carol McCarthy, Monica Corcoran, Liz Rogers, Rita Flynn, Josephine Hunt.  
Front L to R: Rosanne Maher, Eithne O'Toole, Bernie Collins, Eleanor Power, Aoife Dunne, Florence Bond, Maeve O'Neill



## Chairman's Address



As chairman of The Edmund Rice Choral & Musical Society it is my pleasure to welcome you our audience to The Society's production of "Johann Strauss's" Operetta Die Fledermaus . Each year we have difficulty in deciding on what show our Society should produce and after many meetings we agreed on "Die Fledermaus". We normally run our show in April but due to the size and difficulties associated with this production we decided on November and here we are.

We are delighted to have such a strong production team, in Vivian Coates Director of Lyric Opera, Greg Scanlon and Tara Ann Byrne . We welcome Vivian to our Society and also welcome back both Greg and Tara Ann.

We have assembled a front line of principals who are nicely balanced and compliment each other, who together with our chorus will blend nicely to bring you our audience the very best in Strauss. I welcome our guests who are performing with us for the first time, Kathryn Smith, Philip Salmon, Janyce Condon, and Sarah Helsby-Hughes, I hope that they enjoy their stay in our city of music.

We performed this operetta in 1984 and two of our principals were then as now to the fore Greg Scanlon was Musical Director also in 1984 and Tobie Hickey played Alfred then and now plays Frank, congratulations to both for commitment and endurance, "class will always tell"

On behalf of our Musical society I thank you our audiences for your continued support over the years and a special thank you to our Sponsors with out whose financial assistance and support we could not have survived

Please sit back relax and enjoy in the company of ERCMS an evening of Strauss.

Thank you one and all.

Eamonn Flavin,  
Chairman

## Officers and Committee 2004 - 2005

PRESIDENT:.....Bro. Liam Moloughney, C.F.C. Community Leader, Mount Sion.

CHAIRMAN:.....Eamonn Flavin.

VICE CHAIRMAN:.....Noel Hayes.

SECRETARY:.....Mary Collins.

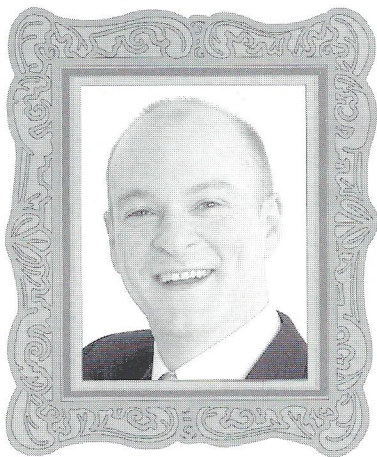
TREASURER:.....Margaret Cashin.

P.R.O:.....Patsy Meade.

REGISTRAR:.....Bernie Collins.

COMMITTEE:.....Christy Brophy, Joe Cashin, John Kelly, Trudy O'Byrne,  
Dermot Sullivan, Martin Lawrence, Tom O'Driscoll, Sean Dower.

A.I.M.S. REPS:.....Madge Whelan, Christy Brophy and Sean Dower.



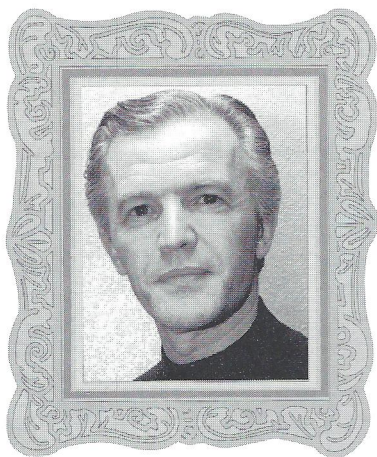
*Vivian Coates - (Director / Designer)*

Born in Dublin, Vivian Coates studied at the Dublin City University and The College of Music, Dublin before going on to work as an assistant Director with Scottish Opera, Opera North [Leeds], The D'Oyly Carte Opera Company, Wexford Opera Festival and Opera Ireland.

He has also worked as co-director for The Royal Opera House, Covent Garden on "Carmen" for the International Festival in Jerusalem and has directed "La Traviata" for Opera Ireland. He is Artistic Director of Lyric Opera, Dublin whose home is the National Concert Hall. He has directed and designed most of its productions to date which include "Aida", "La Bohème", "Lucia di Lammermoor", "Suor Angelica", "Cavalleria Rusticana", "Tosca", "Hansel und Gretel", "Rigoletto", "Madama Butterfly" and "The Merry Widow". He has also directed major productions for Festival's Productions which include "Camelot", "Oliver!", "Fiddler on the Roof" and the sell-out production of "My Fair Lady", "The Sound of Music" and "The King and I" here, at the NCH.

As a director he is highly sought after throughout the country and has been invited to direct "Born in a Trunk" with Anne Bushnell and the RTE Concert Orchestra at The NCH and The Helix. He produced and directed "Excerpts from The Irish Ring" at Carnegie Hall, New York, The Lyric Opera, Baltimore and The State Theatre, New Jersey with Jim Molloy Promotions and recently directed and designed the European premier of "Ragtime".

Future plans include "Aida" in October with Lyric Opera, "The Wizard of Oz" next Christmas here at the NCH and "Die Fledermaus" at the Theatre Royal, Waterford in November.



*Greg Scanlon - (Musical Director)*

A native of Waterford, Greg has been part of the music scene in the South East for many years. He has sung a wide spectrum of roles from Mozart's Requiem and The Christmas Oratorio, to numerous stage roles. His performances have won him both A.I.M.S and festival awards and in the process have earned him invitations to perform on RTE radio and television and at the National Concert Hall.

As a conductor Greg has worked with many of the premier choral societies of the region, taking three of them to National choral honours with A.I.M.S. He has conducted at festivals in Waterford, Rome, England and Northern Ireland, where he won performance and conducting awards in alternate years.

The last few years has seen Greg take time to indulge in a long held interest in composition and already his music is reaching a wider audience. Local and Irish performances have been followed by performances in England, Wales, Sweden and Germany. This year brought further requests from Germany, Israel and Canada and next year brings a new piece for the National Youth Choir of Australia.



*Tara Ann Byrne (Bolger) - (Choreographer)*

Tara Ann, born in Waterford and now residing in Gorey, Co. Wexford, began dancing at an early age and took a great interest in all aspects of dance and stage. She choreographed her first show at the age of 14 and hasn't looked back since, indeed where would she get the time to.

Tara Ann has had along and successful association with The Edmund Rice Choral & Musical Society and is delighted to be back again, her only regret is that the show is not more demanding of her skills. Still she enjoys working with the familiar faces of home. Tara Ann is as busy as ever in the South East and further a field, this year alone she has been involved with Carnew, Tullamore and Gorey Musical Societies.

Over her long career as a choreographer Tara Ann has been nominated for her excellence and has won awards in A.I.M.S and at The Waterford Festival of Light Opera and Bangor, Northern Ireland Festival. The cast and society members are delighted to have Tara Ann as part of our Production Team and as usual appreciated her assistance and patience during rehearsals.



*Kathryn Smith - (Rosalinda Eisenstein)*

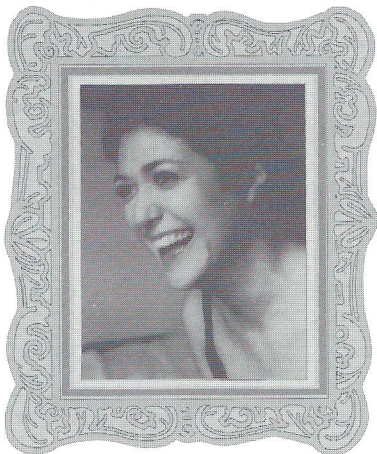
Kathryn studied in her native Dublin with eminent opera singer and teacher Dr. Veronica Dunne and renowned repetiteur and accompanist Jeannie Reddin. During her studies Kathryn obtained the L.R.S.M. and now teaches singing at the Leinster School of Music, Griffith College, Dublin. Having won many prestigious awards at home and abroad, she became one of the most sought after performers in the Country and played numerous principal roles in many of the popular shows and operettas.

Kathryn spent some very profitable years in the UK. She toured extensively before embarking on a world tour and received critical acclaim for roles such as 'Musetta', La Boheme, 'Adina' L'elisir d'Amore, 'Susanna' The Marriage of Figaro, 'Adele' and 'Rosalinda', Die Fledermaus, 'Valencienne' and 'Hanna Glavari', The Merry Widow, 'Violetta', La Traviata, 'Konstanze', Die Entfuhrung aus dem Serail. Kathryn has performed a number of these roles in Ireland also, with Lyric Opera, Opera Ireland and Opera Cork. She also performed the role of 'Aida' in a theatrical production by Jim Sheridan of the play 'Strumpet City', which ran for a three month period at the Gaiety Theatre.

Kathryn has been equally applauded for her performances in Gala Viennese Concerts with Lyric Opera Productions, Jim Molloy Promotions and the annual New Years Day concerts with the Symphony Orchestra at the NCH and in September this year was one of the principal Soloists with Jim Molloy Promotions presentation of 'The Magic of Vienna' here at the Theatre Royal Waterford. Kathryn also won critical acclaim for her interpretation of the Maria Callas repertoire in a concert tribute to the life and music of the Diva.

With a large repertoire of Opera, Operetta and Oratorio, Kathryn in constant demand. A regular performer at the NCH and other major venues, she has recorded with the National Symphony and Concert Orchestras and has many television and radio broadcasts to her credit. In December 2001, Kathryn was honoured by the Vocal Heritage Society of Ireland with 'The Margaret Burke Sheridan Award' for her contribution to singing in Ireland.

In 2002, Kathryn made her Carnegie Hall debut, when she performed the principal Soprano roles in 'The Irish Ring Operas'. The show toured other major US venues and was revived again in July this year for a further Irish tour. Kathryn is looking forward to returning to Carnegie Hall next October with 'The Magic of Vienna', and next year also, other concert work will take her to the United States and Canada.



*Janyce Condon - (Adele)*

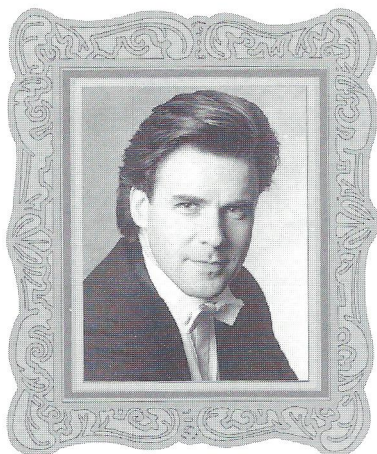
Janyce graduated from University College Dublin and Trinity College Dublin. She began her musical studies at the Conservatory of Music and Drama at the Dublin Institute of Technology with Deirdre Greer-Delaney.

As a member of Opera Theatre Company's Opera Studio in 1999 she covered the role of Cherubino in *Le Nozze di Figaro* and also the role of Adina in *L'elisir d'Amore*.

Janyce was awarded the Dublin Corporation millennium Bursary in 2000 and also received the Advanced Musicians' Bursary from the Arts Council of Ireland in 2001. She has sung for Opera Ireland as a member of the chorus and participated in masterclasses with Suzanne Murphy for the same company. Janyce has also participated in masterclasses in Andorra with Montserrat Caballe.

Janyce has sung numerous recitals both here in Ireland, such as the Bank of Ireland Classical Choice series, and at the Sala de los Espejos at the Teatro del Liceu in Barcelona. Her experience in Oratorio includes Brahms *Deutsches Requiem* for Trinity College Choral Society, Mozart's *Requiem* for the same society and Monteverdi's *Magnificat* at the Kings Chapel in the Gothic Cathedral in Barcelona.

This year Janyce is to sing the role of Clara in a new opera by Peter King. She sang the role of Adele in Lyric Opera's production of *Die Fledermaus* at the National Concert Hall in Dublin. In November she will repeat this role ERCMS in the Theatre Royal, Waterford.

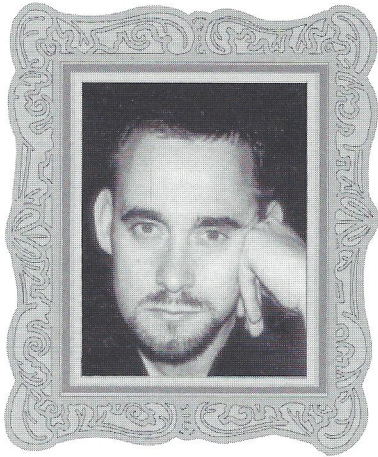


*Philip Salmon - (Gabriel Eisenstein)*

English tenor Philip Salmon began musical life as a boy chorister at St. Paul's Cathedral, London, and was an Exhibition Scholar at the Royal College of Music. His operatic career began with the title role in Debussy's *Pelleas et Melisande* for Marseilles, Strasbourg and for Welsh National Opera with Pierre Boulez. He has sung major roles for the British companies, and in France, Italy and New Zealand, and sang Tamino (*The Magic Flute*) for Dublin Grand Opera.

In concert he has appeared with many British and European orchestras, and in the USA, Australia and Japan, with Sir Colin Davis, Sir John Eliot Gardiner, Sir Charles MacKerras, Sir Yehudi Menuhin, Kent Nagano and Richard Hickox. He has also recorded for Deutsche Grammophon, Philips, Erato, Oiseau-Lyre, Koch-Schwann, Virgin and Hyperion. Television includes Marschner's *The Vampyr* (awarded the Prix d'Italia and the Berlin TV Prize) BBC 2 and Channel 4, Britten's *The Turn of the Screw*, with Scottish Opera (BBC 1) and a recital of Chabrier songs from the Edinburgh Festival (BBC 2).

Earlier this year Philip Salmon sang Eisenstein with Diva Opera in Britain, France and Switzerland (including gala performances with Jose Carreras) and with Lyric Opera, Dublin in the National Concert Hall, and Monostatos (*The Magic Flute*) with Scottish Opera. He has just returned from performing *Thespis/Mercure* in Rameau's *Platee* with New York City Opera. Philip first came to Waterford ten years ago with Opera Theatre Company, Dublin, and is delighted to be back.



*Frank Beadle - (Alfred)*

After winning a Scholarship to study with Mary Brennan and Deborah Kelleher in the Conservatory of Music and Drama in Dublin, Frank went on to win the Tenor Solo in the Feis Ceol.

Since then he has gone on to play many roles in Opera, Operetta and Musical theatre in Dublin and around the country. Some of his highlights are "Il Doncaro" Don Giovanni, "Joseph" La Traviata, "The Messenger" Il Trovatore, "Parpignol" La Boheme, "The Defendant" Trial by Jury, "St Brioche" The Merry Widow, "Camille" The Merry Widow, "Tony" West Side Story, "Mr Snow" Carousel, "The Arbiter" Chess, all in the NCH Dublin, Gaiety Theatre Dublin, Draiocht Theatre Dublin, Rupert Guinness Theatre Dublin and Theatre Royal Waterford.

He has performed in the Anna Livia Opera Festivals Productions of IL Trovatore and Martha and also Opera Irelands Productions of Lady Macbeth, Tosca and Jenufa. He has also performed with Lyric Opera in their Productions of Madame Butterfly, La Traviata, Cavalleria Rusticana and The Merry Widow again all at the Gaiety Theatre Dublin and NCH.

He has recorded a Musical Theatre Soundtrack with the RTE Concert Orchestra and has broadcast on RTE Radio 1 on Christmas Days "Victorian Christmas". He has also directed and produced a series of successful concerts in the NCH and around the country. He has directed "Broadway Melodies" in the Draiocht Theatre for Coolmine MS.

Frank also tours the country performing as part of a Tenor Trio as well as a soloist, with performances all over Ireland and the UK. He is currently studying with Ms Kathryn Smith. Frank would like to take this opportunity to thank Ms Pauline Cooper and Mr Aidan Faughey for all their help in the preparation of this role.

Frank is making a welcome return to the society having appeared with us in our 2002 production of "The Merry Widow".



*Tobie Hickey - (Frank)*

Tobie has appeared in many productions with Edmund rice, starting with our production of "Patience". Some of the roles he has played with us include Perchick in "Fiddler on the Roof" for which he won Best Supporting Actor in The N.I. Festival of Light Opera, Strephon in "Iolanthe", Curly in "Oklahoma", Ravenal in "Showboat" to mention just a few. Tobie has been twice nominated for Best Male Voice in A.I.M.S and he won Best Comedian Award 2000-2001 for Nicely Nicely in "Guys & Dolls". He has played with most of the musical societies in and around Waterford City and earlier this year he played Beadle in "Sweeney Todd" with Bowler Hat Theatre Company. He has also been a part of the two local productions for the closing night of

WIFLO, he narrated the Irish premier of "Chess in Concert" in which he played the part of Walter. Tobie has always played a diverse range and style of musical theatre from Gilbert & Sullivan, Rodgers & Hammerstein, through to Sondheim. In our last production of Die Fledermaus, Tobie played the part of Alfred so this time he is reversing the role and becomes the jailer instead of the jailbird. Tobie is married to Anne, also a former player with us and they have two children, Brendan and Julie.

# Die Fledermaus - The Cast

Oro

ROSALINDA EISENSTEIN.....KATHRYN SMITH  
 GABRIEL EISENSTEIN.....PHILIP SALMON  
 ADELE.....JANYCE CONDON  
 DOCTOR FALKE.....BRENDAN PAYNE  
 ALFRED.....FRANK BEADLE  
 FRANK.....TOBIE HICKEY  
 PRINCE ORLOFSKY.....SARAH HELSBY HUGHES  
 IDA.....STEPHANIE FOLEY  
 DOCTOR BLINT.....DES MANAHAN  
 FROSCH.....PAUL DILLON

CONDUCTOR.....  
 VIOLINS.....  
 VIOLA.....  
 CELLO.....  
 BASS.....  
 FLUTE.....  
 OBOE.....  
 CLARINETS.....  
 HORNS.....  
 TRUMPETS.....  
 TROMBONE.....  
 PERCUSSION.....

## Ladies Chorus:

Bernie Collins, Florence Bond, Rita Flynn, Josephine Hunt,  
 Eleanor Power, Trudy O'Byrne, Eithne O'Toole, Finola Jackson,  
 Rose Ann Maher, Carol McCarthy, Maeve O'Neill, Stephanie Foley,  
 Liz Rogers, Monica Corcoran, Aoife Dunne.

## Gents Chorus:

John Myler, Vincent Kervick, Martin Lawrence, Pat Carroll,  
 Donal Forristal, Christy Brophy, Mark Plunkett, Dermot Sullivan,  
 John Johnston - Kehoe, Michael O'Rourke, John Bond.

## Dancers:

Mary Theresa Madders, Deirdre Mc Evoy,  
 Megan Cassidy, Isobel Rush.

## Flunkies:

Francis Flynn, Anthony Carroll (Mount Sion Pupils)

## Synopsis

ACT 1 EISENSTEIN'S  
 (INTER  
 ACT 11 A SALON IN P  
 (PAUSE  
 ACT 111 GOVERNOR F





# Orchestra

.....Greg Scanlon  
  
.....Teresa Costello (Leader)  
Patricia Cuddihy  
Eimear Heaney  
David Wallace  
Cian O'Carroll  
Emma Scanlon  
  
.....Deirdre Scanlon  
Victoria Burlia  
  
.....Maeve Mc Evoy  
Gerri Dunne  
  
.....Victor Burlia  
  
.....Aine McCarthy Kent  
Megan O'Carroll  
  
.....Síle Daly  
  
.....Michael Lynch  
Peter Fahey  
.....Kevin O'Carroll  
Gillian Chester  
  
.....Barry Lawlor  
Edward O'Neill  
  
.....Liam Walsh  
  
.....Nicholas Bailey

# Production Team

DIRECTOR.....VIVIAN COATES  
MUSICAL DIRECTOR.....GREG SCANLON  
CHOREOGRAPHER.....TARA - ANN BYRNE  
CO-ORDINATOR.....EAMONN FLAVIN  
LIGHTING.....AIDAN MC GRATH  
REHEARSAL PIANIST/S.....ANGELINE DEVLIN  
PAULINE COOPER  
STAGE MANAGER.....BRIAN COLLINS  
SET DESIGN.....VIVIAN COATES  
SET PAINTING.....JOHN O'DONOHGUE  
ACT 11 PAINTING.....MIRANDA LINDON  
SET CONSTRUCTION.....JIM WHELAN  
COSTUMES.....HOMBURGS OF LEEDS  
WARDROBE.....AVRIL MUSGRAVE  
ELAINE TIGHE  
BELINDA CASEY  
CHRISSIE SHEEHAN.  
HAIR & MAKE UP DESIGN.....ALI MURPHY  
WIGS.....DAUPHINES OF BRISTOL  
MAKE UP SUPERVISOR.....ROISIN DEEGAN  
SUSAN HEARN  
PROPS.....MARY DOHERTY  
PROGRAMME COVER &  
POSTER IMAGE.....LYRIC OPERA PRODUCTIONS  
PUBLICITY.....PATSY MEADE  
PROGRAMME.....JOE CASHIN  
EAMONN FLAVIN  
STAGE CREW.....BRIAN COLLINS & COMPANY  
HOUSE MANAGER.....MARGARET CASHIN  
FRONT OF HOUSE.....SOCIETY MEMBERS  
PROMPT.....CATHERINE POWER  
PHOTOGRAPHS.....PATSY MEADE

# Theatre Royal Staff

DIRECTOR.....Michael Hunt  
TECHNICAL MANAGER.....Tony O'Regan  
FRONT OF HOUSE MANAGER.....Tom Skelton  
BOX OFFICE MANAGER.....Cathy McGuigan  
BOX OFFICE ASSISTANT.....Christina Donnelly  
BOOK KEEPER.....Anne-Francoise Power  
OFFICE ASSISTANT.....Michael Smullen  
FRONT OF HOUSE STAFF.....Paddy Power, John MacManus,  
Michelle Glendon, Christine Donnelly  
STAGE STAFF.....Frank Burke, Tom O'Driscoll, Andrew White

# of Scenes

.....PARTMENT, VIENNA 1894.  
.....(15 MINUTES)  
  
.....NCE ORLOFSKY'S PALACE.  
.....(15 MINUTES.)  
  
.....ANK'S OFFICE, CITY JAIL.

Theatre Royal Waterford gratefully acknowledges financial support from Waterford City Council, The Arts Council, Waterford Area Partnership and Waterford City Enterprise Board. Media Partners - Munster Express Newspaper and WLR FM

## *Die Fledermaus - Synopsis*

### Johann Strauss

#### ACT I.

Vienna, 1890s. Through the windows of the Eisenstein home floats the serenade of Alfred, a tenor still in love with his old flame Rosalinde, now the wife of Gabriel von Eisenstein. Adele, a chambermaid, saunters in reading an invitation to a masked ball; Rosalinde, bedeviled by a headache and believing she has heard Alfred's voice, enters but finds only Adele. The maid asks for the evening off to visit a "sick aunt," a plea her mistress dismisses. Alfred steps into the room and begins to woo Rosalinde, who resists his verbal blandishments but melts on hearing his high A. The suitor leaves as Eisenstein and his lawyer, Blind, arrive from a session in court: Eisenstein has been sentenced to a fortnight in jail for a civil offense. No sooner does he dismiss the incompetent advocate than his friend Falke comes to invite Eisenstein to a masquerade, suggesting he bring along his repeater stopwatch, which charms all the ladies, so he can accumulate pleasant memories to sustain him during his confinement in jail. Rosalinde joins Adele in a bittersweet farewell to Eisenstein before he goes off to prison, got up, to his wife's surprise, in full evening dress. Sending Adele to her "aunt," Rosalinde receives the ardent Alfred. Their tête-à-tête is interrupted by the warden Frank, who mistakes Alfred for the man he has come to arrest. Rosalinde persuades Alfred to save her name by posing as her husband, and Frank carts him off to jail.

#### ACT II.

In an antechamber at the palace of Prince Orlofsky, the nobleman's guests, Adele and her cousin Ida among them, await the arrival of their host. Orlofsky enters, quite bored — even with Falke's promise of a comedy of errors. The prince proclaims his guests free to do anything that suits their fancy — "Chacun à son gout." Adele, dressed in one of Rosalinde's most elegant gowns, laughs off Eisenstein's suggestion that she resembles his wife's chambermaid. Frank enters, and Rosalinde, also invited by Falke, arrives disguised as a temperamental Hungarian countess; she is soon wooed by her own reeling husband, whose pocket watch she steals to hold as proof of his philandering. Rosalinde agrees to sing a song about her "native" land, a spirited czardas, after which the guests move on to a magnificent dining area to toast the joys of wine, good fellowship and love. Champagne flows, and the guests dance wildly until dawn. When the clock strikes six, Eisenstein staggers off to keep his appointment at the jail.

#### ACT III.

Moments later at the prison, Frosch, a drunken jailer, tries to keep order among the inmates, who are unable to sleep because of Alfred's singing. Frank arrives, still giddy with champagne, followed shortly by Ida and Adele, who, thinking him a theatrical agent, believes he might further her stage aspirations. Frank, hearing someone at the door, hides the girls in a cell and then admits Eisenstein, who has come to begin his sentence. The new prisoner is surprised to learn his cell is already occupied by a man who claims to be Eisenstein and who was found supping with Rosalinde; to obtain an explanation from the impostor, Eisenstein snatches a legal robe and wig from his astonished lawyer. No sooner is he disguised than Rosalinde hurries in to secure Alfred's release and press divorce charges against her errant husband. With her would-be paramour, she confides her flirtation to the "lawyer." Enraged, Eisenstein removes his disguise and accuses his wife of promiscuity, at which Rosalinde whips forth the watch she took from him at the ball. Orlofsky and his guests arrive to celebrate the reconciliation of Rosalinde and Eisenstein, singing a final toast as Eisenstein is taken away.



## About Die Fledermaus

Die Fledermaus was the third stage work of Johann Strauss the Younger. It was his greatest stage success and is often called "the Queen of Operettas". The plot was taken from a German comedy which had been re written by Offenbach's librettists for a vaudeville production. Steiner, the Director of the *Theater an der Wien*, bought the show but hesitated for some time to present it because it's setting was so specifically Parisian. It was then suggested that the work should be re-arranged as an operetta with music by Strauss, and straight away the lyric writers were set to work on the adaptation.

The music was composed at the turn of the year in 1873. Strauss threw himself into the work with an inspired enthusiasm. It is said that he did not leave his villa for six weeks. The whole score was written in forty two nights.

The operetta had a cold reception at its premier at the *Theater an der Wien* on April 5th, 1874, and was withdrawn after only 16 performances. But shortly afterwards it was produced in Berlin where it had tremendous success and ran for over 100 performances. When it was next produced in Vienna it met with the same enthusiasm. During the next 20 years it was performed all over the world. In 1894 it was included in the repertoires of serious Opera Houses. In modern times it has been staged in all the major opera houses, and is considered something of a New Year speciality. It has been filmed and televised in various versions.

The overture is an outstanding piece of music often played on its own and is included in the repertoire of all the major orchestras.

J.C

## Die Fledermaus - The Bat

### MUSICAL CONTENTS.

### ACT 2

#### ACT 1

NO.

#### OVERTURE

LITTLE DOVE, CARISSIMA - (ALFRED)  
WHEN I ASKED YOU TO DEFEND ME - (ADELE, ALFRED)  
OH! MY FRIEND, DON'T DESPAIR - (FALKE and GABRIEL)  
OH! HUSBAND MINE -  
(ROSALINDA, GABRIEL, ADELE)  
HERE'S TO LOVE - (ALFRED, ROSALINDA, FRANK)

MELOS.

I THINK IT WOULD BE VERY QUEER - (ALFRED, ROSALINDA FRANK AND CHORUS.)

MELOS

FINALE ACT 1

WHAT A FEAST - (CHORUS)  
CHACUN A SON GOUT - (ORLOFSKY and CHORUS)  
THE LAUGHING SONG - (ADELE, ORLOFSKY, FALKE, GABRIEL and CHORUS.)  
HOMELAND - (ROSALINDA and CHORUS.)  
THE TICK TOCK POLKA - (GABRIEL and ROSALINDA.)  
CHAMPAGNE - (PRINCIPALS and CHORUS.)  
MERCİ, MERCİ, MERCİ! - (ENSEMBLE)  
BROTHER MINE - (ENSEMBLE)  
ENTERTAINMENT  
FINALE ACT 11 - (THE ENTIRE COMPANY)

### ACT 3

OPENING ACT 111.  
AFTER THE BALL - MELOS (FRANK)  
IF I WERE PLAYING OPHELIA - (ADELE and CHORUS)  
THE LEGAL PROFESSION - (ROSALINDA, ALFRED, and GABRIEL)  
FINALE ACT 111 - (PRINCIPALS and CHORUS)

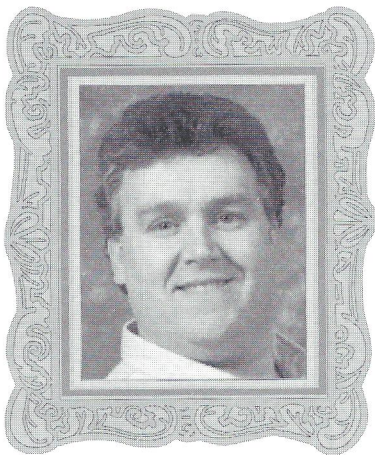


*Sarah Helsby-Hughes - (Prince Orlofsky)*

Sarah was born in Liverpool and graduated from the Birmingham conservatoire of Music in 1998, where she studied with Pamela Cook MBE. Sarah has worked for many opera companies in the UK and beyond, taking principal parts for Mid – Wales Opera, Leicester Opera, Carl Rosa Opera and Raymond Gubbay. She sang Suzuki (Madama Butterfly) for Pavilion Opera, two roles in Philip Glass' opera Satyagraha, Sara in Jonathan Dove's Tobias and the Angel for City of Birmingham Touring Opera and for Opera Minora (Amsterdam) she appeared as Britten's Phaedra. She has also appeared as Maddalena (Rigoletto) for Lyric Opera Dublin.

Sarah has a wide concert repertoire and regularly appears as a soloist in the UK and Europe and combines this with her other career as a cabaret artist, presenting a diverse musical range "from Bach to Britten" with even a touch of Abba! Sarah has performed at charity and corporate events and provided after dinner entertainment for companies across the country. In 2003 Sarah was chosen to support Dexy's Midnight Runners in their successful comeback tour and made her Royal Festival Hall debut singing a programme of classical spiritual music. Sarah is also an accomplished designer, creating concert and evening wear and has designed costumes for a number of operas.

*Brendan Payne - (Doctor Falke)*



Brendan is originally from Dublin and has lived in Tramore since 1989. Since moving south, he has had a huge impact on the musical scene here, taking part in shows with De La Salle, Tramore Musical Society and ERCMS. His many roles include Ali Ben in "The Desert Song", Tevye in "Fiddler on the Roof", Lord Mountararat in "Iolanthe", the Pirate King in "The Pirates of Penzance" and he was nominated for an A.I.M.S Award for his hilarious interpretation of Pooh Bah in "The Mikado" and for his role as Tevye in "Fiddler on the Roof".

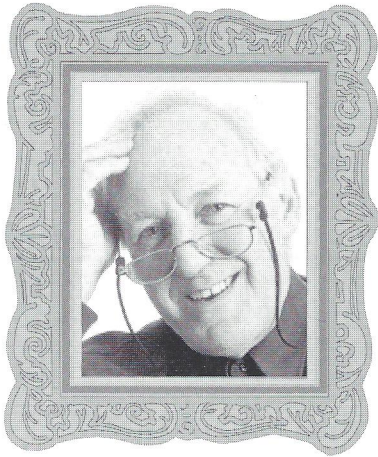
Brendan, being also a very talented producer, is equally at home on both sides of the footlights. His fine baritone voice ensures that he is in great demand as a concert soloist.

Brendan joined the ERCMS in 1991 and since then has given his time and services unstintingly in many different guises: performing in shows and concerts, directing, serving on committee and acting as vice-chairman. He is really enjoying playing Falke in tonight's production.



*Stephanie Foley - (Ida)*

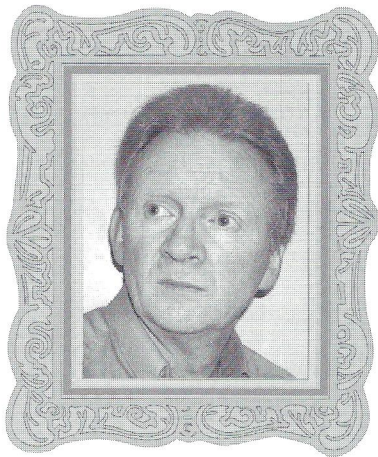
Stephanie is currently a Leaving Cert Student at the Presentation Secondary School. She has studied voice at WIT Music School since 1998. She played the part of Lily in Marian Ingoldsby's new opera "Lily's Labyrinth" in 2002 at Garter Lane. She also performed in the role when "Lily's Labyrinth" was produced at the National Concert Hall in 2003. Stephanie played the part of Ado Annie in the school production of "Oklahoma" in 2003. She is looking forward to her first performance with the Edmund Rice Choral and Musical Society.



*Des Manahan - (Doctor Blint)*

Des is one of Waterford's most popular and most versatile performers, who excels in comic roles but is at home in any part he undertakes. His talents are not only seen in Waterford but nationwide as he is in great demand with societies in Dublin, Cork and many other areas. He has performed many times in Grand Opera including "Maritana", "Rigoletto", "Don Pasquale" and "Il Trovatore". Des has appeared in many musicals and light operas with local societies including "The Mikado", "Cabaret", "The Sound of Music", "The Gypsy Baron", "The Desert Song", "The Merry Widow" and "Iolanthe" for which he won the International Best Actor Award at the Gilbert & Sullivan

Festival in Buxton. Des was granted the Hall of Fame Award for 1998 from WLRfm and Waterford Crystal Arts and Entertainment Committee. Des excelled in the comic part of Sir John in our 2003 production of "Me and My Girl". Des has the rare talent of getting the best out of every part and no doubt he will do the same for this performance.

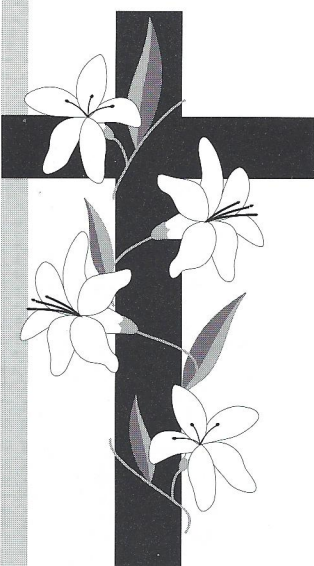


*Paul Dillon - (Frosch)*

Another first for this veteran of bits and pieces (small parts if you prefer). This show sees him getting his name on the production poster for the first time ever along with the producer and all the other big names. His name is plastered all over the town, and by the end of the 2nd act, when you'll get to see him, so will he. Rumour does have it that he was given the part of Frosch just to keep him out of the tenor line altogether. He has been noted (i.e. \_\_\_\_\_) for his rare showing during rehearsals and, even when he's there, for having his head stuck in a book, taking more notes (i.e. not \_\_\_\_\_). He had to give up the day job and is now a student in WIT (the smoking ban has a lot to answer for!). His most recent role-your-owns include: Birdboot in The Real Inspector Hound,

Tiresius in Jim Nolan's Redback, Roosevelt in Annie.

*Remembrance*



The Society lost one of its best loved members last month with the passing of Mai O'Dwyer. Mai was one of our unsung heroes and will be sadly missed by us all. We extend our sincere sympathy to Mai's daughter Siobhan and all her family. Mai epitomised what is best in a society member both on and off stage, a gentle lady who was always willing to help others nothing was either too big or too small, If it needed doing Mai could be relied on.

"Solas na Flaithais "to you Mai and may you continue to enjoy your singing with the Angels and those of your family who have pre deceased you.

We will miss your singing and your good humour and craic, but we will remember you always.

E.F.

## Sponsorship 2004

### Main Sponsors:

**Nightly:**

**Tuesday:** The Munster Bar  
**Wednesday:** Frisby Construction  
**Thursday:** Dawn Meats  
**Friday:** ESB Networks Business Unit  
**Saturday:** CJ Falconers & Associates  
Consultant Architects

Combined Credit Unions  
Tower Hotel  
Bausch & Lomb  
Waterford Crystal  
Waterford City Council  
City Square Shopping Centre  
ESB Shared Services  
Morris' Builders Providers  
First Choice Travel

### Other Sponsors:

Alfie Hale Sport & Bars

Allied Irish Banks Ltd.

Anglo Irish Bank

Anthony Brophy

Bank of Ireland

Bus Eireann

Commercial Refrigeration

John Cleary

Caulfields Bar (Joe Dreelan)

David Flynn Builders

Fitzgerald Insurances

Frescold Services Ltd

Granville Hotel

Hasbro

Hennebry's Camera Shop

Keogh Practice Ballybricken

Kervick Bros

Kervicks Bar

MA Molloy & Sons

McDonald Builders

M. M. Halley & Sons

M. W. Keller & Sons

NJ Lambert Construction

Osprey Transport, Butlerstown

Permanent TSB

PJ Reddy's

Price Waterhouse Coopers

Shoe Centre Patrick Street

Swan Plastics

The Book Centre

Tony Fitzgerald Menswear

Tony Roche Menswear

Ulster Bank

Waterford Drug Company

(Carroll's Chemist)

Waterford News & Star

Waterford To-Day

Widger Bros. Victuallers

WLR FM

The Society would appreciate your support  
for our raffle sponsored by Waterford Crystal.

Grand raffle sponsored by First Choice Travel  
and Bus Eireann

# Raffle



## A.I.M.S.

The Association of Irish Music Societies (A.I.M.S) was founded in 1965 to promote and foster the activities of musical societies on both sides of the border. A.I.M.S seeks to improve standards of production and performance through its annual awards scheme. A two-tier system (Gilbert and Sullivan) of adjudication was introduced a few years ago, because of the hugh number of shows to be adjudicated. For a society or an individual to receive a nomination followed by an award is the equivalent of an Oscar. The awards are made at their Annual Seminar.

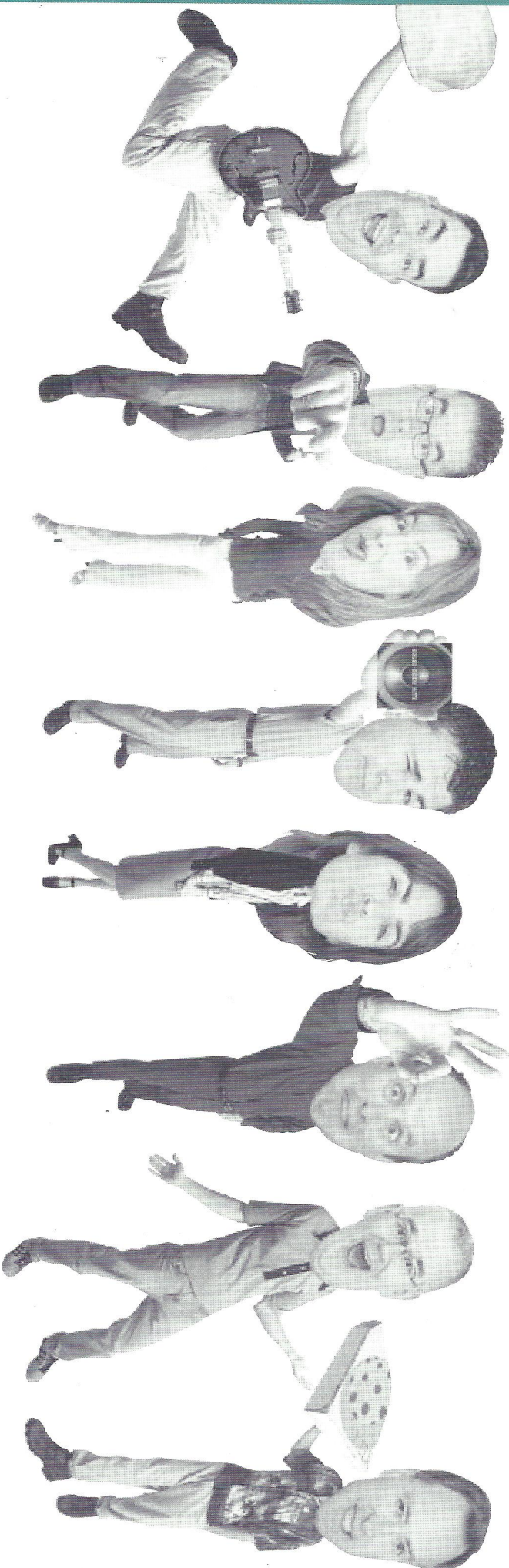
Membership of A.I.M.S promotes friendly co-operation between societies through workshops and its bulletin "Showtimes" which is published ten times a year.

Our Society has been a member since our foundation in 1976, and we are very proud of the nominations and awards which we have received down through the years.



## A.I.M.S. Awards

1981	Adjudicators Special Award		The Desert Song
1983	Runner-up Best Choral Presentation		Patience
1987	Best Comedian	Des Manahan	Oklahoma
1988	Runner-up Best Supporting Actress	Lupita Sheehan	Show Boat
1990	Runner-up Best Comedienne	Martina Flynn	Guys & Dolls
1991	Best Lighting	Tony O'Regan	My Fair Lady
	Best Actor	Brendan Corcoran	My Fair Lady
	Best Overall Performer	Brendan Corcoran	My Fair Lady
1992	Runner-up Best Musical Director	Greg Scanlon	Annie Get Your Gun
	Best Comedienne	Martina Flynn	Annie Get Your Gun
1993	Best Male Singer	Philip Byrne	South Pacific
	Runner-up Best Overall Show		South Pacific
1994	Best Gilbert and Sullivan		Pirates of Penzance
	Best Programme		Pirates of Penzance
1996	Best Gilbert and Sullivan		Mikado
	Runner-up Best Choral Presentation		Mikado
	Runner-up Best Lighting	Tony O'Regan	Mikado
	Runner-up Best Comedian	Brendan Payne	Mikado
1997	Best Gilbert and Sullivan		Iolanthe
	Best Choral Presentation		Iolanthe
1998	Runner-up Best Gilbert and Sullivan		Pirates of Penzance
	Runner-up Best Choral Presentation		Pirates of Penzance
1999	Runner-up Best Comedian	Richie Hayes	Showboat
2003	Runner-up Best Supporting Actress	Aideen Wylde	Me and My Girl



# big on personality

GREAT FOR MUSIC • BEST FOR NEWS • FIRST FOR SPORT

Relax, chill out and tune into WLRFM - all week long from 06:30 to 01:00. Get all the latest news and sport, up to the minute traffic and weather reports, crazy competitions and of course the ultimate sounds from the 70's, 80's, 90's and 00's. Your station plays music for you.

E: [info@wlrfm.com](mailto:info@wlrfm.com)

[www.wlrfm.com](http://www.wlrfm.com)

