

Edmund Rice Choral & Musical Society

Affiliated to A.I.M.S.
proudly presents



Music by Jerome Kern
Book & Lyrics by Oscar Hammerstein II
by arrangement with
Josef Weinberger Ltd.

SHOW BOAT

Director: Pat McEvoy

Musical Director: Wayne Brown

Choreographer: Michelle Condon

Theatre Royal
Waterford

Tuesday 23rd to Sunday 28th March 1999.

Nightly at 8 p.m.

Souvenir Programme £ 1



Showboat is a story which sets out to show that love can sometimes overcome all adversity. It is also a show that depicts other important aspects of life that effect us all such as deprivation, hate and happiness. It is a musical which requires a sizeable cast and a good production team. We believe that we have an excellent team in Pat, Wayne, Michelle and Siobhán all working with the society for the first time. We welcome them and wish them well.

Having staged Gilbert & Sullivan Light Operas in our last three productions we are happy to be staging another musical that has much chorus involvement.

We are delighted to be back in the refurbished Theatre Royal. Societies such as ours need this beautiful theatre and we appreciate the support we receive from the general public through their attendance as part of the audiences and the many generous sponsors, without whom the Society could not flourish.

The committee, the members and the cast of the Society hope that you enjoy the production and we welcome our many guests especially the ones from A.I.M.S. to whom we are affiliated.

As Chairperson I wish to thank everyone associated with the show and hope that you have enjoyed being a part of it as I have been honoured to represent the Society.

Have a wonderful time.

William Moran
Chairperson.



Officers & Committee 1998/'99.

President:	Brother P.M. Hegarty, Superior, Cnoc Sion CBS
Chairperson:	William Moran
Vice Chairperson:	Fergal Blanchfield
Secretary:	Anita Reddy
Treasurer:	Margaret Cashin
P.R.O.:	Eithne O'Toole
Registrar:	Bernie Collins
Committee:	John Cleary, Sean Dower, Edmond Flavin, Bobby O'Leary, Michelle Jackson, Frank Keane, Vincent Kervick.

A.I.M.S Representatives

Eithne O'Toole - Madge Whelan - Fergal Blanchfield

Nightly Sponsors

**BAUSCH & LOMB (IRELAND) LTD.
ELECTRICITY SUPPLY BOARD
KENNETH CROSBY EUROPE LTD.
SHOE CENTRE, PATRICK STREET.
TOWER HOTEL
WATERFORD CRYSTAL
WATERFORD STANLEY**





Time is a river; the mighty force of its steady, unending flow shapes and alters the course of history and peoples' lives. Show Boat's story covers one of the most dramatic eras in American history. It begins in the U.S. South, in Natchez, Mississippi, during the Post-Reconstruction of the 1880's, as survivors of the terrible destruction of the Civil War strive to reconstruct the basis of American democracy. Some seek to restore their lives; others struggle to preserve their hard-fought freedom.

Against this historical panorama, the romance of SHOW BOAT unfolds. Time flows on, often placid, occasionally turbulent. The story moves from the Southern agrarian community of Natchez to the industrialised North of turn-of-the-century Chicago. The advent of electrical technology and World War I again changes the course of people's lives in America and around the World. SHOW BOAT ends in at the exciting height of the Roaring Twenties, the Jazz Age, and the eve of the Stock Market Crash and the Great Depression. Like a mighty river, time exerts its power over the characters of SHOW BOAT. It was an era when the destiny of a land and its people was transformed forever.

Previous Productions

1977	H.M.S. Pinafore	1988	Show Boat
1978	Gypsy Baron	1989	The Arcadians
1980	Calamity Jayne	1990	Guys & Dolls
1981	The Desert Song	1991	My Fair Lady
1982	Merry Widow	1992	Annie Get Your Gun
1983	Patience	1993	South Pacific
1984	Die Fledermaus	1994	Pirates of Penzance
1985	New Moon	1995	Brigadoon
1986	Fiddler on the Roof	1996	The Mikado
1987	Oklahoma	1997	Iolanthe
		1998	Pirates of Penzance

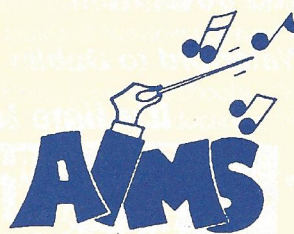
Role Of A.I.M.S.

A.I.M.S. - the Association of Irish Musical Societies, is the All-Ireland, 32 county organisation that is dedicated to the promotion of Musical Theatre to the highest standard possible. The Association is made up of members of Musical Societies, and functions at local, regional and national levels. It is there to help Societies with information, expertise and advice on all aspects of Musical Theatre. Through 'Showtimes' its magazine which is published ten times every year, it allows members keep up to date on what is happening in individual Societies and in the country generally. Each year an A.I.M.S. adjudicator attends and assesses over eighty shows. Then in June at The Annual Seminar the best performers, singers, chorus, etc., are announced. Forget your Oscars, to receive an A.I.M.S. Award is the greatest honour a performer in Ireland can aspire to.



First
Active

Sponsors
Of The
AIMS Awards



THE ASSOCIATION OF
IRISH MUSICAL SOCIETIES



A History of Show Boat

On December 27th, 1927, the Florence Ziegfeld production of "Show Boat" opened at the glamorous Ziegfeld Theatre and promptly altered the course of the American Musical Theatre. It originated from a colourful best-selling novel by Edna Ferber in 1926 and was transformed into a landmark musical at the hands of Jerome Kern and Oscar Hammerstein II.

The standard musical fare on Broadway at the time, had been musical extravaganzas, reviews, and operettas of Victor Herbert, Rudolf Friml and Sigmund Romberg. These operettas were characterised by an exotic locale, a fairy-tale story and stock characters. Little wonder then that Edna Ferber thought preposterous the notion of her best-selling book adapted as a musical, with scantily-clad showgirls prancing on the deck of the Cotton Blossom, the Mississippi Show Boat of her story. The story was complex and followed three generations of a showboat family for half a century as they performed up and down the Mississippi.

Hammerstein and Kern went to work on Show Boat, even though Ferber was still dubious about the project. One day they brought her "Ol Man River", to be sung by the black Stevedore, Joe. "The music mounted, mounted," Ferber wrote in her memoirs, "and I give you my word, my hair stood on end, the tears came to my eyes. I breathed like a heroine in melodrama. That was music that would outlast Jerome Kern's day and mine". And how right she was. "Show Boat" became an instant hit. The critics praised everything - the show was noted as a "nostalgic portrait of a whole era in American history, the musical spans nearly 40 years and traces Magnolia's development from innocence to independence. She is the first character in an American Musical to thus mature before the audiences eyes". Audiences responded to the beauty, cast, strong story and melodic verses of the show and kept it running until Saturday 4th May, 1929. At the Theatre Royal, Drury Lane, the production ran for 350 performances and in 1929 the musical was presented in Australia and also in Paris under the title "Mississippi".

The show has been presented on screen no fewer than three times, the most recent being 1951 M.G.M. production starring Ava Gardner. It is interesting to note that Hollywood was responsible for turning the actual Show Boat into fairytale-like paddle steamer as it made a more dramatic impact on screen. The original showboats of the Mississippi were floating theatres, built atop flat-bottom barges, on which the company lived and acted. They were powered by being lashed to small, twin-stacked steamboats that actually pushed them but curiously were called towboats. The history of the American Musical Theatre, quite simply is divided into two eras: everything before Show Boat, and everything after Show Boat. This seminal work revealed that a Broadway musical was free to embrace any kind of theme, however controversial, could deal with serious issues in a suitably mature fashion, could counterpoint light and cheerful scenes with those of human anguish, and yet never need to sacrifice popularity and a memorable tuneful score. Long may Show Boat continue to sail!



*What a
difference a*

DAY *Return*

makes !

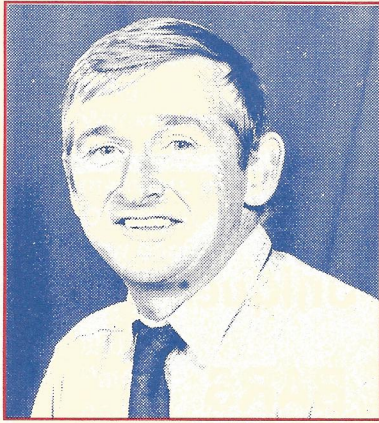
*After a day away, you'll be
relaxed, refreshed and recharged.*

And if you travel from

Waterford to Dublin it'll cost **Just £12**

It's time to take the train



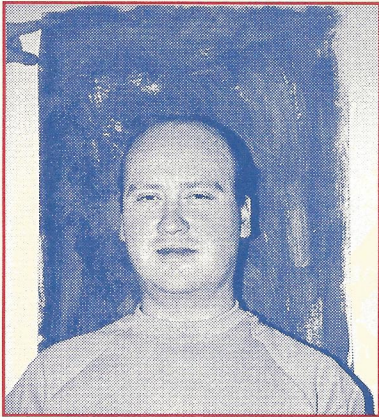


Pat McEvoy Director

Pat hardly requires introduction, having been prominent in Waterford theatre circles for over twenty years. He is equally at home on either side of the footlights and is a versatile and talented performer. During his distinguished career, he has participated in more than twenty musicals, playing a variety of roles but especially comic ones, in which he excels. Regular theatre goers will recall his performances in such shows as 'Guys & Dolls', 'Fiddler On The Roof', 'Carousel', 'Die Fledermaus', 'South Pacific', 'The Sound Of Music', 'Pirates Of Penzance', 'Brigadoon' and many others.

On the production side, Pat has directed our Viennese Concert, 'South Pacific' & 'Whistle Down The Wind' for Tramore Schools, 'The Sound Of Music' for Dungarvan N.S. and Rayban's, 'Tops Of The Town'. He won the prestigious WLR / Waterford Crystal Arts & Entertainment Award for 'Whistle Down The Wind'.

While mainly associated with E.R.C.M.S., which he joined in 1980, he has also been actively involved with the Waterford Dramatic Society and the Waterford Pantomime Society. The Society is delighted that Pat has joined us as Producer this year; his enthusiasm, dedication and endless patience with such a huge cast has made his contribution truly invaluable.



Wayne Brown Musical Director

Wayne's involvement with shows started when he was pushed somewhat unwillingly into pulling a curtain for a school production. Since then he has gone on to work in nearly every capacity with many of Waterford's Societies (except Choreographer - but he's working on that!). His shows include 'West Side Story', 'Joseph', 'Annie', 'A chorus Line' - all with Premier Productions, 'Oliver' with Stage Fright as well as a healthy dose of pantomimes, Tops of the Town and various variety shows over the years. He appeared on stage several times, but after a grass skirt, a kilt and being inside a ten foot plant, he eventually got the message. He has competed with Premier Productions Choral Group in the Aims choral festival for the last three years, where they won the Musical Cameo competition twice in successive years. After 'Show Boat' he would look forward to a long break, but it's unlikely he's going to get it. Wayne is all the more delighted to be part of 'Show Boat' since the first show he ever saw was Edmund Rice's 'Fiddler' back in 1986, and he would like to thank the Committee, Pat, Michelle, Siobhan and all the Cast sincerely for their hard work over the last few months.



Michelle Condon Choreographer

Michelle has worked with every theatrical enterprise in the Waterford area at some stage in her career, as Choreographer, Performer or at backstage work. She has played in such shows and choreographed 'Godspell', 'Little Shop Of Horrors', 'The Boyfriend', 'The Pajama Game', 'My Fair Lady', 'Chicago', 'West Side Story' and 'Annie'. She has also choreographed various Pantomimes, Tops Shows and the Waterford Dramatic Society. Michelle is the backbone of the highly successful 'Waterford Stage School', a performing arts school for the younger generation. Last year we were all delighted to see Michelle get national AIMS award for best choreographer for her outstanding contribution to Premier Productions 'Joseph'. She also choreographed certain extracts for the AIMS final night concert for the WIFLO. She has enjoyed her excursion on the 'Cotton Blossom' very much.



Siobhán Mannix Chorus Mistress

Siobhán is a native of Cork, where she studied at the Cork School of Music and then at U.C.C. She is now teaching music at Newtown School and has been involved in many musicals since moving to Waterford:

New Ross N.S. "Fiddler on the Roof, Tramore School's, "Whistle Down The Wind", Newtown School's, "My Fair Lady", Premier productions, "A Chorus Line" and "South Pacific".

Siobhán worked with us on "The Mikado" in 1996 and we are delighted to have her back on "Show Boat".

Story of "Show Boat"



The action centres upon the love affair between Magnolia Hawkes, daughter of the owner of the Show Boat, and Gaylord Ravenal, a somewhat irresolute but charming young man. Ravenal is a passionate gambler, free with his money when successful; but when he finds himself hard up and with no prospects of meeting his commitments, he considers it better to disappear from Magnolia's and their daughter Kim's life. Magnolia cannot face going back to her parents and their constant reminders that her mother's warnings against marriage with Ravenal were justified. Her old friends and colleagues from the Show Boat help her to obtain work. But there is a happy ending - as is only right and proper in an operetta - and after many years Ravenal comes back to his wife.

Joe, the odd-job man, a Negro with a fine voice, is a constantly recurring figure, and his song 'Ol' Man River' runs through the whole operetta. 'Ol' Man River' has the character of a Negro spiritual, and gives a vivid picture of the eternal, unchanging Mississippi.

Show Boat also touches on the racial problem in the Southern States of the U.S.A. The prima donna in the story, Julie La Verne, has Negro blood in her veins, and as a result of her marriage with a white actor, her life becomes one long tragedy.

Tribute to Sylvia Walker

Everybody in musical circles in Waterford was shocked and saddened by the untimely death of Sylvia last year. She made a huge contribution to the Edmund Rice Society for many years, as Chorus Mistress and also coaching principals behind the scenes. Sylvia was a gifted teacher and members of the chorus loved her to tutor them because she was so dedicated and such a perfectionist. Her attention to detail was legendary but nobody minded her strictness because she was so kind and humourous.

Sylvia was a wonderful singer and won many awards. She was a member of the Christ Church Cathedral Choir and was also their organist. The members of the Society were honoured to sing at her funeral services. Sylvia was truly loved and admired; she may be gone but she will live forever in our hearts.



**Unique
BARS**

**For
Food Drinks
Sport &
Friends**

Reddy's
Bar & Restaurant

Special menus,
Finger Food
available for
Private
Parties

50 High St.
Waterford.

Telephone
856 856



**Lunch
Buffet**

12 noon
to 3 p.m.



**A La
Carte**

3 p.m. to 8 p.m.
Nightly



The Society was formed in October, 1976, as part of the activities of the Mount Sion Past Pupils Union. It's expressed aim was to foster and encourage the love of, and participation in, music and song.

Within a few weeks of its formation, the society was in rehearsal for its first Production, in May, 1977, of H.M.S. Pinafore. We are extremely proud to have with us on stage, and back-stage, tonight some members from that inaugural Production, Des Manahan, Peter O'Brien, John Cleary, Rita Cleary and Bobby O'Leary (Committee). From that humble beginning the Society has gone from strength to strength and is now one of the leading Societies on the Musicals circuit, with a major production each year.

In addition, however, to its annual spring show, the society has always retained a strong choral content, and has graced many an occasion with its fine choral singing. It has performed regularly at Choral Concerts and in Cabaret, with such as the Barrack St. Concert Band, the Band of the Curragh Command, St. Patrick's Brass Band and well known and talented artistes Niamh Murray, Joan Merrigan, Ronan Tynan, Anthony Kearns, Phillip Byrne. It has competed regularly at the A.I.M.S. Choral Festival, the Northern Ireland Festival of Light Opera, and the Waterford International Festival of Light Opera.

The Society and its members have won many awards at these Festivals, and more recently, at the prestigious Buxton International Festival Gilbert and Sullivan. In 1996, the Society was invited to sing at the Vatican in Rome on the occasion of the Beatification of Blessed Edmund Rice, after whom the Society is named.

It is our hope that our Society will be a worthy monument to Blessed Edmund, and will continue to grace our city for many more years to come.

A.I.M.S. Awards

1981	Adjudicator's Special Award		The Desert Song
1983	Runner Up, Best Choral Presentation		Patience
1987	Best Comedian	Des Manahan	Oklahoma
1988	Runner Up Best Supporting Actress	Lupita Sheehan	Show Boat
1990	Runner Up Best Comedienne	Martina Flynn	Guys & Dolls
1991	Best Lighting	Tony O'Regan	My Fair Lady
1991	Best Actor	Brendan Corcoran	My Fair Lady
1991	Best Overall Performer	Brendan Corcoran	My Fair Lady
1992	Runner Up Best Musical Director	Greg Scanlon	Annie Get Your Gun
1992	Best Comedienne	Martina Flynn	Annie Get Your Gun
1993	Best Male Singer	Philip Byrne	South Pacific
1993	Runner Up Best Lighting	Tony O'Regan	South Pacific
1993	Runner Up Best Overall Show		South Pacific
1994	Best Gilbert & Sullivan		Pirates Of Penzance
1994	Best Programme		Pirates Of Penzance
1996	Best Gilbert & Sullivan		Mikado
1996	Runner Up Best Choral Presentation		Mikado
1996	Runner Up Best Lighting	Tony O'Regan	Mikado
1996	Runner Up Best Comedian	Brendan Payne	Mikado
1997	Best Gilbert & Sullivan		Iolanthe
1998	Runner Up Best Gilbert & Sullivan		Pirates Of Penzance
1998	Runner Up Best Choral Presentation		Pirates Of Penzance



ELECTRICITY SUPPLY BOARD
Bord Solathair an Leichtreachais

**GET THE MOST
FROM ELECTRICITY**

Make your home energy efficient



ELECTRICITY SUPPLY BOARD
Bord Solathair an Leichtreachais

Cast Of Characters

Captain Andy Hawkes	Des Manahan
Parthy Ann (his wife)	Eithne O'Toole
Magnolia (their daughter)	Sinéad Kiely
Julie La Verne (star of the Show Boat)	Jacqueline Hutchinson
Stephen Baker (her husband)	John O'Carroll
Gaylord Ravenal (a river gambler)	Tobie Hickey
Frank Schultz (villain of the Showboat)	Bill Stafford
Ellie May Chipley (his girlfriend)	Melanie O'Driscoll
Queenie (the cook on the "Cotton Blossom")	Annette Howley
Joe (her man)	Noel Hayes
Pete (the engineer)	Pat Carroll
Windy (an old pilot)	Paddy Greene
Vallon (the sheriff)	Francie White
Rubberface	Richie Hayes
Backwoodsman	Paul Dillon
Jeb (his companion)	John Walshe
First Barker	Fergal Blanchfield
Second Barker	Tom Roche
Strongwoman	Ellen Power
Lottie	Michelle Jackson
Dolly	Louise Hannon
Hazel	Cathy Frewen
Sport (a gambler)	Paul O'Brien
Mrs O'Brien (landlady)	Berna O'Brien
Jim Greene (manager of the Trocadero)	Denny Corcoran
Jake (the pianist)	Tom Roche
Charlie (the doorman)	Fergal Blanchfield
Mother Superior	Mary O'Connor
Kim (as a child)	Deirdre McEvoy
Kim (as an adult)	Sorcha Walshe
Drunk (at the Trocadero)	Willie Moran
Waiters (at the Trocadero)	Peter O'Brien
.....	John Kelly
Newspaperboys	Harry Hutchinson
.....	Kevin Power

Black Chorus

Bernie Collins
Geraldine Croke
Catherine Curran
Sharon Dillon
Rita Flynn
Josephine Hunt
Trudie O'Brien
Mary O'Connor
Breda O'Regan
Matilda O'Sullivan
Pat Phelan
Catherine Power
Madge Whelan

Fergal Blanchfield
Christy Brophy
Frank Keane
Vincent Kervick
Willie Moran
Paul O'Brien
Peter O'Brien
Tom O'Neill

White Chorus

Cathy Frewen
Louise Hannon
Michelle Jackson
Mary Rose Kiely
Michelle O'Brien
Catherine Power
Mary O'Connor
Peter O'Brien
Tom O'Neill
Tom Roche
John Walshe

Dancers

Ann Corcoran
Michelle Glendon
Janice Hunt
Órla Shanahan
Lorraine Tubritt
Sorcha Walsh

Children

Stephanie Dollard
Kate Hutchinson
Ciara O'Connor
Lynne Stafford

Edmund R & Music

Affiliated
proudly



Theatre Royal Waterford

Tuesday 23rd to Sunday 28th
Nightly at 8 p.m.

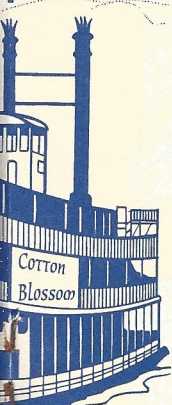
Based on the novel "S
Show Boat is presented by arrangement with the Betty K
Hammerstein Organisation as agent for R. Andrew Boose,
Rosen Esq., Trustee fo
These amateur performances are given by a

Fergal Blanchfield
Christie Brophy
Conor Dunne
John Kelly
James Kiely
Willie Moran
Paul O'Brien

Cleo Howley
Brenda Murphy
Saoirse O'Toole

Ice Choral Society

to A.I.M.S.
presents



Music by Jerome Kern
Book & Lyrics by Oscar Hammerstein II
by arrangement with
Josef Weinberger Ltd.

SHOW BOAT

March 1999.



"Show Boat" by Edna Ferber.
Miller Trust for the Jerome Kern interests, The Rodgers and
Eq., Trustee for Oscar Hammerstein II interests, and Stuart M.
the Edna Ferber interests.
ngement with JOSEF WEINBERGER LIMITED.

Musical Numbers

Act 1

Overture	Orchestra
Opening / Cotton Blossom	Ensemble
Where's The Mate For Me?	Ravenal
Only Make Believe.....	Ravenal & Magnolia
Ol' Man River	Joe & Coloured Chorus
Can't Help Lovin' That Man	Julie, Queenie & Coloured Chorus
Ol' Man River (Reprise)	Joe
You Are Love	Ravenal & Magnolia
Finale Act 1	Ensemble

Act 2

Opening / World Fair.....	Ensemble
Why Do I Love You?	Ravenal, Parthy, Andy, Magnolia & Chorus
Bill	Julie
Can't Help Lovin That Man (Reprise).....	Magnolia
Only Make Believe (Reprise)	Ravenal & Kim
Life Upon The Wicked Stage	Frank, Ellie & Girls
Old Man River (Reprise)	Joe
After The Ball	Magnolia & Chorus
You are Love (Reprise).....	Ravenal

Orchestra

Conductor	Wayne Brown
Leader	Theresa Costello
Violins	Patricia Cuddihy
.....	Lynn Sullivan
.....	Cian O'Carroll
Viola	Deirdre Scanlon
Cello	Maeve McEvoy
Bass	Kent McDonald
Flute	Aine McCarthy
Oboe	Kevin Kavanagh
Clarinet.....	Michael Nolan
Bassoon	David Rhodes
French Horn.....	Kevin O'Carroll
Trumpets	Mark Fitzgerald
.....	Neil Brophy
Trombone	Alan Duggan
Keyboard	Siobhan Mannix
Percussion	Paul Nolan

Synopsis Of Scenes

Act 1

Scene 1:	The Levee at Natchez on the Mississippi. In the Eighties.
Scene 2:	Kitchen pantry of the "Cotton Blossom". Five minutes later.
Scene 3:	Auditorium and stage of the "Cotton Blossom". One hour later.
Scene 4:	Box-office, on foredeck. Three weeks later.
Scene 5:	Auditorium and stage during the 3rd Act of "The Parson's Bride" that night.
Scene 6:	The top deck. Later that night.
Scene 7:	The levee at Greenville. Next morning.

Act 2

Scene 1:	The Midway Plaisance, Chicago World's Fair, 1893.
Scene 2:	A Room on Ontario Street, 1904.
Scene 3:	Rehearsal Room, Trocadero Music Hall. A few days later.
Scene 4:	St. Agatha's Convent. About the same time.
Scene 5:	Trocadero Music Hall. New Year's Eve, ringing in the new year, 1905.
Scene 6:	New Orleans Street
Scene 7:	Top deck of the 'Cotton Blossom'. 1920.
Scene 8:	Levee at Greenville. The same night.



Sinéad Kiely (Magnolia)

Sinéad comes from Dungarvan in Co. Waterford, where she has appeared in many productions with Dungarvan M.S. including 'Oklahoma', 'Carousel', and 'The Pirates of Penzance'. She studied voice technique at The Leinster School of Music and also at WIT with Peter McBrien. Sinéad has performed with the Gilbert & Sullivan Singer at the NCH and in the RTÉ production of 'The Pirates Of Penzance'. She played Nancy in the world premiere of 'Silas Marner' and 'Despina' in 'Cosi Fan Tutte' at the RDS. Sinéad was recently involved with the Stage Fright premiere of Bryan Flynn's show 'Pentimenti' in which she created the role of Anna Bauer. She also played Hodel in De La Salle's 'Fiddler On The Roof'.

This is Sinéad's first role with Edmund Rice and we wish her a very happy voyage in 'Show Boat'.



Eithne O'Toole (Parthy'Ann)

Eithne has been with Edmund Rice for four years and on the committee for the last two. She was a chorus member in 'Mikado' and 'Iolanthe', played the minor role of Isabel in 'Pirates Of Penzance', and this is her first big part. She is a keen G & S supporter but has loved being a part of the 'Cotton Blossom' crew.



Jacqueline Hutchinson (Julie)

Jacqueline was dragged up Bunker's Hill by her father Harry to join ERCMS! She is still with us seventeen years later (She now drags Harry to rehearsal!) and is an invaluable member of the society, participating in every aspect of our activities.

Jacqueline is no stranger to the stage having appeared in many productions with this society throughout the years. Her roles include Sapphire in 'Patience', Edith 'The Pirates Of Penzance' and Celia in 'Iolanthe' which travelled to the Gilbert & Sullivan Festival in Buxton in 1997. A vastly experienced performer Jacqueline has entertained us many times in the Large Room, both with the society in their choral concerts and with Chris Henchy with whom she studies voice.

She is delighted to be playing the part of Julie and especially to be working with her childhood neighbour, Pat McEvoy.



Annette Howley (Queenie)

Annette's singing career began with leading roles in school productions of "The Mikado" and 'The Quaker Girl' at the Presentation Convent, Waterford. She attended the late Stanley Boyer for singing lessons and now studies with Chris Henchy. She was a soloist in Chris's recent concert and also performed solos with 'Madrigallery', the Waterford chamber choir under the direction of Kevin O'Carroll.

Annette has played the following roles with the society - Kate, 'The Pirates Of Penzance', Peep Bo, 'The Mikado', Ruth 'The Mikado'. Just recently she played the spirited role of Frume - Sarah in the De La Salle production of 'Fiddler On The Roof'.

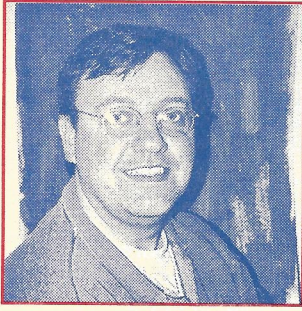
Annette is very excited to be playing the role of 'Queenie', which she does with great gusto and expression.



Melanie O'Driscoll (Ellie)

This is Melanie's fourth role with Edmund Rice Choral Musical Society. She has appeared with De La Salle and Premiere Productions, playing a variety of parts, including Audrey, "Little Shop Of Horrors", Maggie "Brigadoon", and Louise Bigelow "Carousel". She enjoys all aspects of theatre from singing to dancing and each year (from May to September) joins the cast of the successful Waterford show. Melanie's really looking forward to appearing as Ellie.

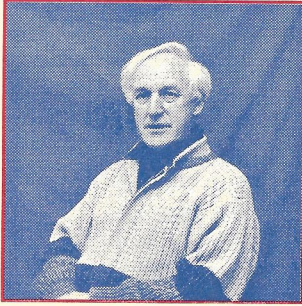




Tobie Hickey (Ravenal)

Tobie is one of the most talented musical performers in the area and is much in demand with various societies in the South East. He has starred in many productions down through the years and played 'Captain Von Trappe' in the 'Sound Of Music' with New Ross Musical Society last month.

Tobie joins The Waterford Show every summer in a leading role; he is remembered by thousands of visitors to the city for his lively commentary on our history and for his heartfelt rendition of traditional melodies. Tobie was Gaylord Ravenal in E.R.C.M.S. last production of 'Show Boat' and is really at home in the role of the charming river gambler.

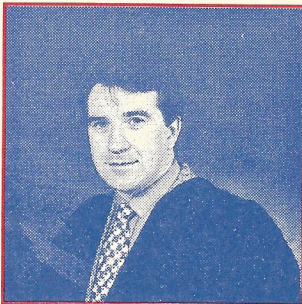


Des Manahan (Cap'n Andy)

Des is one of Waterford's most popular and versatile performers, who excels in comic roles, but he is at home in any part. His talents are widely recognised outside the city, as he performs with many other companies nationwide; in fact, he has just finished touring with the sellout production of 'Me and my Girl'. This year has already been a busy time for him as he also had a major role in the widely acclaimed 'Pentimenti'.

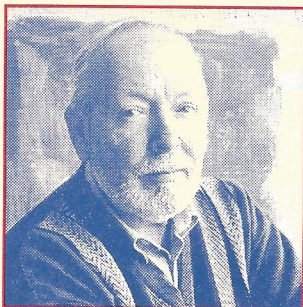
He has won numerous awards down through the years for many diverse roles. He won best supporting actor as Koko in our production of "The Mikado" at the WIFLO and went on to win an International Award at Buxton G & S Festival as the Lord Chancellor in 'Iolanthe'.

Des has played Captain Andy in our own previous production of 'Show Boat' and is very happy to return as the Master of the 'Cotton Blossom' once again.



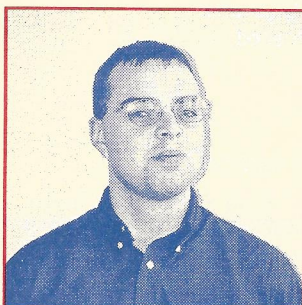
John O'Carroll (Steve)

John hails from Cork city and has recently moved to Waterford. This is his stage debut, but he has been involved in choral singing for many years. He is currently a member of the Waterford City Choir. John relishes his role as 'the handsome Stephen Baker' and is very welcome to the society's ranks.



Noel Hayes (Joe)

Noel began singing while at school in the Manor C.B.S., where he sang a lead role in the Operetta 'The Magic Key'. He has sung with the Waterford Grand Opera Society, the West London Opera Society, De La Salle Musical Society and The Edmund Rice Choral and Musical Society. The roles he has sung include Marullo 'Rigoletto', The Sergeant 'La Boheme', Captain of the Guard 'Maritana', Joe 'Show Boat', Private Willis 'Iolanthe' and many others. We are very pleased that he has returned to renew his acquaintance with 'Old Joe'.



Bill Stafford (Frank)

Bill is very happy to have this chance to play 'Frank', a role he has wanted to play for a long time. Recently Bill appeared in a very successful production of "Fiddler on the Roof" with the De La Salle Musical Society. Prior to this Bill starred in the widely acclaimed production of 'Pentimenti' with Stage Fright (where he originated the role of Ernst) and also appears on the original cast recording. Other shows include, 'A Chorus Line' (Paul), 'Pirates of Penzance' (Samuel), 'West Side Story' (Bernardo), 'Annie' (President Roosevelt), 'Grease' (Roger), 'Chicago' (M.C.), 'The Hired Man' (Joe Sharp). Bill has done ensemble work on such shows as Oliver, South Pacific, Brigadoon, How to Succeed in Business, Chess, Hello Dolly, Bells are Ringing, Gala 121, Magic of the Musicals and various John Player Tops Shows which were broadcast on national television. On two occasions Bill appeared with Waterford Dramatic Society; 'Stags and Hens' (Kav) and 'Bar and Ger' (Bar) winning an award for his portrayal of Bar.



Production Team

Director: Pat McEvoy
 Musical Director: Wayne Brown
 Choreographer: Michelle Condon
 Chorus Mistress: Siobhán Mannix
 Stage Director: Tom O'Driscoll
 Scenery: Paul Lazell
 Lighting: Tony O'Regan
 Costumes: No Mac Productions
 Wardrobe Mistress: Avril Musgrave,
 Wardrobe: Belinda Casey, Chrissie Sheehan, Valerie Bolger
 Properties: Ann Johnson, assisted by Louise Shanahan
 Make-Up: Gerry Forristal
 Sound: Star Systems
 Publicity, Poster & Programme Design: Eithne O'Toole
 Prompts: Martina Flynn & Imelda Kirwan
 Stage Crew: Darren Jones, Ann Louise Kelly, Ger Stubbs, John Grubb,
 Eileen Power, Tom O'Neill, Séan Kennedy, Anthony O'Neill
 Set Construction: Tom O'Driscoll, John Walshe, Séan Kennedy, Damien Kelly
 Set Painting: Paul Lazell, Michelle Jackson, Sharon Dillon, Tom O'Driscoll
 Theatre Royal Poster: Michelle Jackson
 House Manager: Margaret Cashin
 Front Of House: Society Members
 Programme: Eithne O'Toole, Bobby O'Leary
 Catering: Elsie Walsh, Breda O'Regan, Bernie Collins
 Photographs Joe Cashin
 Theatre Royal Staff Gerry Lowry, (Stage Director); Tony O'Regan, (Lighting Technician);
 Frank Burke,(Assistant); Odran Fitzgerald, (Flyman); Noreen Roche (Box Office)



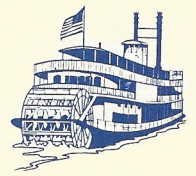
Minor Leads

Back Fergal Blanchfield,
 Francey White, John O'Carroll
Middle Paul Dillon, Tom Roche,
 Paul O'Brien
Front Richie Hayes, Peter O'Brien
Missing from photo;
 John Walshe, Pat Carroll,
 Paddy Greene



Dancers

Back Ann Corcoran, Sorcha Walshe,
 Janice Hunt, Órla Shanahan
Front Melanie O'Driscoll,
 Lorraine Tubbritt
Missing from photo;
 Michelle Glendon



Back Sharon Dillon, Geraldine Croke, Mary-Rose Kiely, Michelle O'Brien, Catherine Curan, Catherine Power, Madge Whelan, Breda O'Regan, Pat Phelan
Middle Michelle Jackson, Cathy Frewer, Josephine Hunt, Rita Flynn, Trudy O'Byrne

Front Rita Cleary, Eleanor Power, Bernie Collins, Matilda O'Sullivan, Janice Hunt, Michelle Glendon, Mary O'Connor

HIBERNIAN BAR

Bank Place

*Come to Bill's for your after show drinks-
just across the road!*



Back William Moran, Conor Dunne, James Kiely, Tom O'Neill, Vincent Kervick, Fergal Blanchfield, Tom Roche, Tom O'Neill, Frank Keane

Front John Walshe, Noel Hayes, John Kelly, Christie Brophy, Denny Corcoran, Paul O'Brien, Peter O'Brien, Paddy Greene, Pat Carroll, Fanny White, Paul Dillon, Richie Hayes

Please join the cast & crew for our
AFTER SHOW PARTY MUSIC

Sunday 28th BRIDGE HOTEL
cover charge £2

The Original Show Boat

by Oscar Hammerstein II



We wrote it in 1926. Attracted by its title, Jerome Kern bought a copy of Show Boat. Before he had read half of it, he asked Edna Ferber for the stage rights, asked me to collaborate with him and asked Ziegfield if he would like to produce it. Within twenty-four hours we had all said yes to him.

Ziegfield rushed us. He wanted it finished in time to open his new theatre, then in the process of construction. We worked fast, but not as fast as Guy Bolton, Joseph McCarthy and Harry Tierney, who finished Rio Rita first, and it was their show that opened The Ziegfield.

In the minutes required to read a half dozen enthusiastic reviews of Rio Rita, Ziegfield's immediate interest in Show Boat faded from intense to mild. His new theatre was successfully launched and what he wanted most was a few months on the soft, warm sands of Florida.

Our production was postponed for a year. Jerry and I were good and gosh darn sore - and I don't mean gosh darn. We were not bright enough to penetrate the disguise of our blessing. The blessing was time. That year's delay made Show Boat a much better play than it would have been had we produced its first draft.

During the best part of the following twelve months we kept rewriting and improving our adaptation. We had fallen hopelessly in love with it. We couldn't keep our hands off it. We acted out scenes together and planned the actual direction. We sang to each other. We had ourselves swooning.

It is lucky we became so emotionally involved with Edna Ferber's characters, because love rendered us blind to all the dangers our friends saw in the undertaking. People seemed to go out of their way to discourage us. "How do you expect to make a musical play out of that?" they would ask. And they would look sorry for us. We realised that the story made several bad breaks with musical comedy tradition, but this was the very thing that endeared it to us.

Well, despite our careful tinkering and manicuring, the play was one hour and a half too long when we opened it in Washington!

This seems impossible to me now, but I know it is true. I know I stayed up all night with Jerry cutting fifty minutes out of the show before its performance. The next forty were the tough ones. We were out on the road for eight weeks, whittling dialogue and music down to playing time (and also waiting for that infernal Rio Rita to drop off in business so that we could at last get in to The Ziegfield Theatre).

We never did reduce it to the time of other musical plays. We never could ring down before 11.27. Some nights spilled over past 11.30 and Ziegfield had to pay the stage crew for an extra hour. He begged me to cut more dialogue. I couldn't find a word I didn't think necessary. I suggested he cut an entertaining but incongruous dance specialty. He wouldn't. So the stubborn deadlock remained.

Hertz

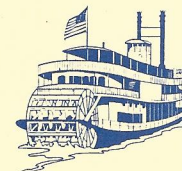
It costs less than you think to get the full Hertz service

For Car Rental Throughout Ireland or Worldwide • Full Range of Cars
Unlimited Mileage Rates • Special Weekend Rates One Way Rentals
Full A.A. Cover • Top Car Hire Firm Award Winners '93-'94-'95

DUBLIN
(01) 767476

NEWRATH, WATERFORD
(051) 78737

WEXFORD
(053) 23511



Alfie Hale Intersport
 Allied Irish Banks
 Allied Signal (Ireland) Ltd.
 Anglo Irish Bank
 Avonmore Waterford Dairies
 Bank of Ireland
 Bausch & Lomb
 Bewleys Ltd.
 Book Centre
 Brooks of Waterford
 Bus Eireann
 Barrotts Chemist, Ballybricken
 Casa Nova Interiors
 Charisma Blinds, High St.
 Cherry's Brewery
 Kenneth Crosbie Ltd.
 Dawn Meats
 Dooley's Hotel
 Douglas Engineering
 Dr. J. Keogh & Partners
 Ernst & Young
 E. Kavanagh & Sons
 E.S.B.
 Tony Fitzgerald Menswear
 Fitzgerald Insurances
 Terry Flynn Travel
 Frentech Engineering Ltd.
 Grannville Hotel
 Harvey Travel
 Hertz
 Hibernian Bar
 Hennebry's Camera Shop
 Iarnrod Eireann

Corporate Members

Anthony Brophy
 Bridge Hotel
 Morris Builders Providers
 Tully & Papathomas

Hennebry's Camera Shop
 Iarnrod Eireann
 Jurys Hotel
 Kiely Meats
 Louisiana Pacific
 M.A. Molloy & Sons
 Management, City Square
 Mr. J.P. McGrath
 Morris Builders Providers
 John Murphy Carpets
 Munster Bar
 Mulligan's Chemist
 Musgrave's Cash & Carry Ltd.
 M.W. Murphy & Sons Ltd.
 National Irish Bank
 Nolan, Farrell & Goff
 Novartis Animal Health
 Nancanco
 Brendan O'Rourke Construction
 O'Shea, O'Toole & Partners
 Pamerelle Fashions, Broad St.
 Des Purcell
 Reddy's Bar
 Tony Roche Menswear
 Rice Guest House
 Sheridan Signs
 Sherwood T.V. (Main Panasonic Dealer For The South-East)
 Sport House
 Trustees Savings Bank
 Ulster Bank
 Walsh's Bar
 Waterford Crystal
 Waterford Electrical Wholesale
 Waterford Stanley

Associate Members

Patricia Cuddihy
 Des Manahan
 Maeve McEvoy
 Aine McCarthy-Kent

Vote Of Thanks To

The Society wishes to thank sincerely anybody who has helped in any way to get this show on stage tonight. We really appreciate your assistance and hope you enjoy the show!



**THE
MUNSTER
BARS**

Bailey's New Street,
 & The Mall Waterford. Tel: 051-874656

**Order your interval drinks in advance –
 Avoid the Rush**

Want to Talk to Waterford? Talk to WLR fm!



Each day in Waterford city and county more adults listen to WLR fm than to any other station.

LISTENED YESTERDAY		MARKET SHARE	
WLR FM	= 61%	WLR FM	= 47%
RADIO 1	= 26%	RADIO 1	= 24%
2 FM	= 23%	2 FM	= 13%
TODAY FM	= 13%	TODAY FM	= 10%

Source: J.N.L.R. Jan. to Dec. 1998 (Mon. to Fri.)

If you've got customers in Waterford, talk to the station that reaches 82% of all adults each week.

Talk to WLR fm!

Call Des, Jonathan, Caroline or Karen on 051 - 877592

