

WATERFORD DRAMATIC SOCIETY

Presents



BY FRANK McGUINNESS

AT THE
THEATRE ROYAL
WEDNESDAY 22ND
TO
SATURDAY 25TH NOVEMBER
AT 8.00. P.M.

STOCKIST OF ALL MUSICAL INSTRUMENTS & ACCESSORIES



Wishing all our Customers and Friends a Happy Christmas

122 THE QUAY WATERFORD. TELEPHONE 051 - 79333

SPECIAL HOLY LAND TOUR EASTER 1990

Depart April 8th - Return April 20th

Led by Rev. Fr. Sean Melody.

Inclusive Cost £975.00.

BOOK NOW WITH



**TEL. No. (051) 72048/9
FOR FURTHER DETAILS**

"Sarah's"

UNISEX HAIR CENTRE
New Street, Waterford
'Phone 76100



"Riva's"

UNISEX HAIR STUDIO
Broad Street Centre
Waterford
'Phone 70392

**Have professional Hair Styling
and Hair Care at the Salons that
care about your Hair**

**Give a Christmas Voucher to
that special Friend**

Proprietors: Martina & Noel Keane

Best Wishes From FRISBY CONSTRUCTION

**Private House Builders with sites at
Cherrymount (Ballytruckle)
College Court (Past the Infirmary)
and now our new site at Silverwood (Ferrybank)**

**FOR DETAILS CONTACT
HARRY O' NEILL OR NOEL FRISBY**

19 Otteran Place, South Parade, Waterford.
Telephone (051) 75409



Declan J. Walsh

FINANCIAL SERVICES

051 - 71029

DO YOU REQUIRE

- | | |
|-------------------------|-----------------------|
| * MORTGAGES | * LUMP SUM INVESTMENT |
| * PENSION ADVICE | * SCHOOL FEES |
| * HOSPITAL CASH BENEFIT | * INSTANT QUOTATIONS |

*For Free Independent Financial Advice Contact (051) 71029
or Call to 47, The Quay, Waterford*

BOSTON CLEANERS LTD.

DRY CLEANING - SUEDE CLEANING
AND CURTAIN CLEANING SPECIALISTS

Michael Street / Summerland / John Street
Telephone 74487



*Continued Success to
Waterford Dramatic
Society*



JANE LESLIE

Jane joined the W.D.S. in 1973 and has filled every position from prompter to president. She has appeared in "The Glass Menagerie", "Philadelphia Here I come", "Bedroom Farce". Gave a memorable performance as Lady Bracknell in "The Importance of being Earnest". She is the author of a number of one act plays for stage and radio. Jane returns to production with "The Factory Girls" after a long absence



LYNDA GOUGH

Lynda started her stage career with Tops '86 and again in 1987. Reached the National Finals in the Gaiety Theatre with Waterford Crystal. She is a member of both De La Salle and Mount Sion Musical Societies. Lynda has appeared in "Showboat" playing the part of Queenie and in "South Pacific" playing Bloody Mary, for which she got an A.I.M.S. nomination. "The Factory Girls" is Lynda's first venture into straight drama

MAIRIN GILMARTIN

Mairin joined the W.D.S. in 1978 and since then has been an active member. She has appeared in many productions such as "The Plough and the Stars", "Canaries", "Bedroom Farce", "The Loves of Cass McGuire", and "Death of a Salesman". In recent years she has taken on the role of producer with such plays as "All my Sons" and "The Wind in the Branches of the Sassafras"



JUDY FALCONER

Judy has been involved in amateur dramatics for several years. After a stint with the Moat Club, Naas and the new Theatre Group, Kilkenny, she joined the W.D.S. in 1972. Since then she has been involved in many productions, both as actress and producer. Some of these productions include "Juno and the Peacock", "Philadelphia Here I Come", "The Loves of Cass McGuire", and "Death of a Salesman".



THE FACTORY GIRLS

BY

Frank McGuinness

Characters

Ellen:	Lynda Gough	Women in Factory
Rebecca:	Mairin Gilmartin	
Una:	Judy Falconer	
Vera:	Geri Oakes	
Rosemary:	Jenny Kirwin	
Bonner (Shop Steward)	Davy Condon	
Rohan (Factory Manager)	Paul Cocoran	

SETTING

Scene 1:	A Shirt Factory in Donegal - Wednesday Morning	
Scene 2:	The Same	Wednesday Lunchtime
Scene 3:	The Same	Thursday Morning
Scene 4:	The Same	Thursday Lunchtime

INTERVAL - 15 MINUTES

Scene 5:	The Managers Office	Friday Afternoon
Scene 6:	The Same	Saturday Morning
Scene 7:	The Same	Saturday Night
Scene 8:	The Same	Sunday Dawn

Directed by
JANE LESLIE

Stage Manager
HELEN MILLS

Assistant Stage Manager
PATTY DE COURCEY

Setting
JANE LESLIE, DAVY CONDON

Prompts
CATHERINE KEATING, MARGARET BUTLER

Set Construction
**DAVY CONDON, HUGO O' DONOVAN, MICHAEL THOMPSON,
BILLY HUTCHINSON.**

Sound
JOHNNY COLLINS

Lighting
TONY O' REGAN

"Aint Goin' to work in no Factory"
Sung By
MISS BROWN TO YOU

Photographs
LEO MURPHY,

Theatre Royal Staff
**LARRY QUINN, GERRY LOWRY, TONY O' REGAN,
ODHRAN FITZGERALD.**



GERI OAKES

Geri has had a lifelong interest in drama. She joined the W.D.S. in 1985 and has appeared since then in "The Loves of Cass McGuire", "Communication Cord", and "The Death of a Salesman". She has direction in mind in the near future

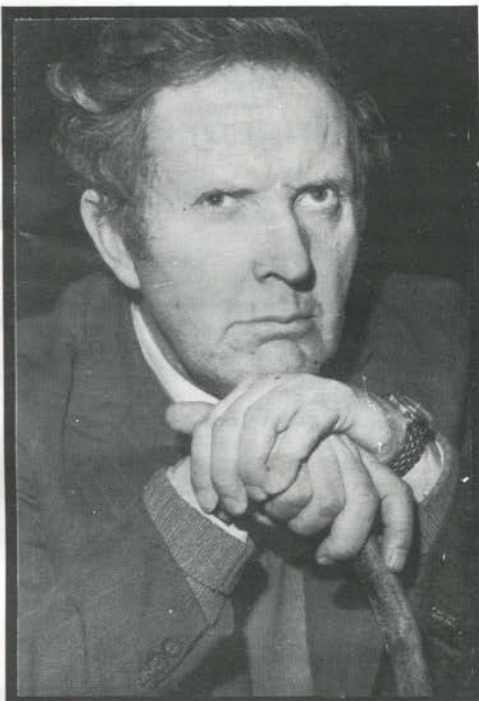


JENNY KIRWIN

Jenny joined the W.D.S. in the Spring of this year. She made her stage debut as Karin in the hilarious comedy "Albert" which was performed in Garter Lane 2 in July. She enjoyed herself so much she has come back for more and now treads the boards in the part of Rosemary in "The Factory Girls"

DAVY CONDON

Davy has been a member of W.D.S. since 1936. His considerable talent and experience in every aspect of drama has been put to great use in those 36 years. He has appeared in plays too numerous to mention and has produced many fine plays including "Canaries", "The Year of the Hiker" and "The Playboy of the Western World".



PAUL CORCORAN

Paul first performed with W.D.S. back in March '87 when he played the part of Martin Claffey in Bryan McMahon's "Honeyspike". Since then he has appeared in most W.D.S. productions to date. He has also been involved with W/F pantomime society on a couple of occasions and has performed in various John Player Tops shows over a number of years with local groups. He is currently a member of the comedy / mime group "The silent Mikes" who are very popular on the local and national cabaret scene.



Get to know the other tower in Waterford...

Waterford has long been famous for its tower. But nowadays, when people talk about 'The Tower' they usually mean The Tower Hotel, Waterford's leading hotel. Conveniently located, The Tower offers every facility for both business and social use.

- 80 tastefully furnished bedrooms with private facilities, colour TV and telephone.
- Excellent Haute Cuisine Restaurant and Coffee Shop/Grill.
- Stylish new Lounge Bar.
- All modern Conference facilities. Also smaller function rooms for receptions, trade shows, meetings etc.
- Wedding Receptions a speciality.
- Ample Car Parking.
- Special Rates for Weekends.



For a friendly atmosphere in comfortable surroundings visit

THE TOWER HOTEL

WATERFORD
Telephone: 051-75801

JONATHON MENSWEAR

**79 The Quay, Waterford.
Telephone: (051) 74784**

**SHIRTS BY
PETER ENGLAND,
CLUBMAN, & VAN HEUSEN**

**LARGE SELECTION OF KNITWEAR
BY
"TRICOT MARINE" AND "TAILTEANN"**

**GIFT VOUCHERS AVAILABLE
FOR THE MAN IN YOUR LIFE**





FAST, RELIABLE SERVICE TO HIRE STANDARDS

There's no denying the impact we've made on the formal hire market ... Why?
The answer is simple.
At Fitzgeralds we offer the finest range of formal hire, together with the best possible customer care.

So, if you want it right and on time - everytime, talk to the experts at Fitzgeralds
We offer:

White Tuxedos, Morning Wear, Evening Wear, Formal Evening Wear - and an exciting range of new accessories.

For a fast, reliable service and "hire" standards

Telephone 051-75297 / 55055
FITZGERALD'S

6 BARRONSTRAND STREET
WATERFORD.

TEL: (051) 75297 / 55055 / 55162

THE MUNSTER BARS



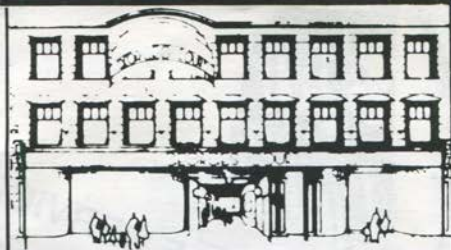
BEST WISHES TO THE
WATERFORD DRAMATIC SOCIETY

from

The Fitzgeralds, Munster Bars & Oak Room Restaurant

The Mall, Waterford.

Georges Court



Waterfords First Shopping Mall

**SHOP IN THE ELEGANT SURROUNDINGS IN
THE HEART OF WATERFORD CITY**

**Malls from Georges St,
Barronstrand St, & The Quay**

At Your SERVICE

Top Quality Print & Design at very Competitive Prices

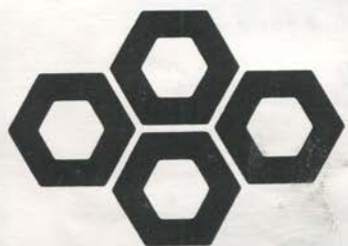
- | | |
|------------------------|----------------------------|
| * Colour Brochures | * Business Cards |
| * Advertising Leaflets | * Envelopes |
| * Programmes | * Labels |
| * Invoices | * Menus |
| * Letterheads | * Gift Vouchers, Etc, Etc. |

TRY OUR PRICES YOU'LL FIND THEM RIGHT

G.K. PRINT.

Rathkieran, Mooncoin, Tel: 051 - 95323

**** Good Quality * Fast Service * Competitive Prices***



**Trustee Savings
Bank**

SHIFT YOUR ASSETS!

*At Trustee Savings Bank O'Connell Street,
we will pay you 9.25% on your Savings.*

*Telephone Desmond Phelan (Manager) or
Kevin O' Carroll (Assistant Manager) at
72988 to discover how easy it is to have
your money working for you at 9.25%*

*We are open daily from 10 a.m. to 4 p.m.
(Monday to Friday) which also includes
late opening until 7 p.m. on Thursday*

TRUSTEE SAVINGS BANK

**O'Connell Street, Waterford.
Telephone 051 - 72988**



Jonny Roche

MENSWEAR

GEORGE'S COURT WATERFORD

Waterford's Leading Menswear Store

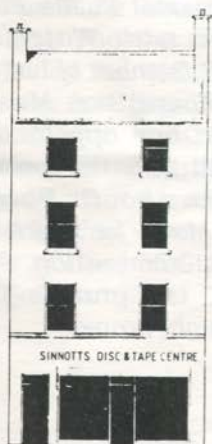
DEPOSITS TAKEN ON ALL STOCKS FOR CHRISTMAS

DRESS SUITS FOR HIRE

WEDDING SUITS OUR SPECIALITY

MORNING AND EVENING WEAR FOR ALL OCCASIONS

SINNOTTS RECORDS



*Wishing
Waterford Dramatic Society
Every Success*

DISC AND TAPE CENTRES
8 MICHAEL STREET, WATERFORD
AND 30 JOHN STREET
Fax and Telephone: (051) 75622

SPONSORS

- * Waterford Crystal.
- * Bank of Ireland, The Quay.
- * Bausch & Lomb (Ireland)
- * Hadensa (Ireland) Ltd.
- * Pinewood Construction Co. Ltd.
- * Cherry's Brewery.
- * Jordans, The Quay.
- * Bank of Ireland, Parnell St.
- * Ulster Bank.
- * U.D.T. Bank.
- * Delaney's Chemist.
- * Fieldmaster.
- * Leo Murphy, Photographer.
- * Hooper-Dolan Insurances.
- * Measurex Ltd.
- * Ardkeen Superstores.
- * Orchardstown Nurseries.