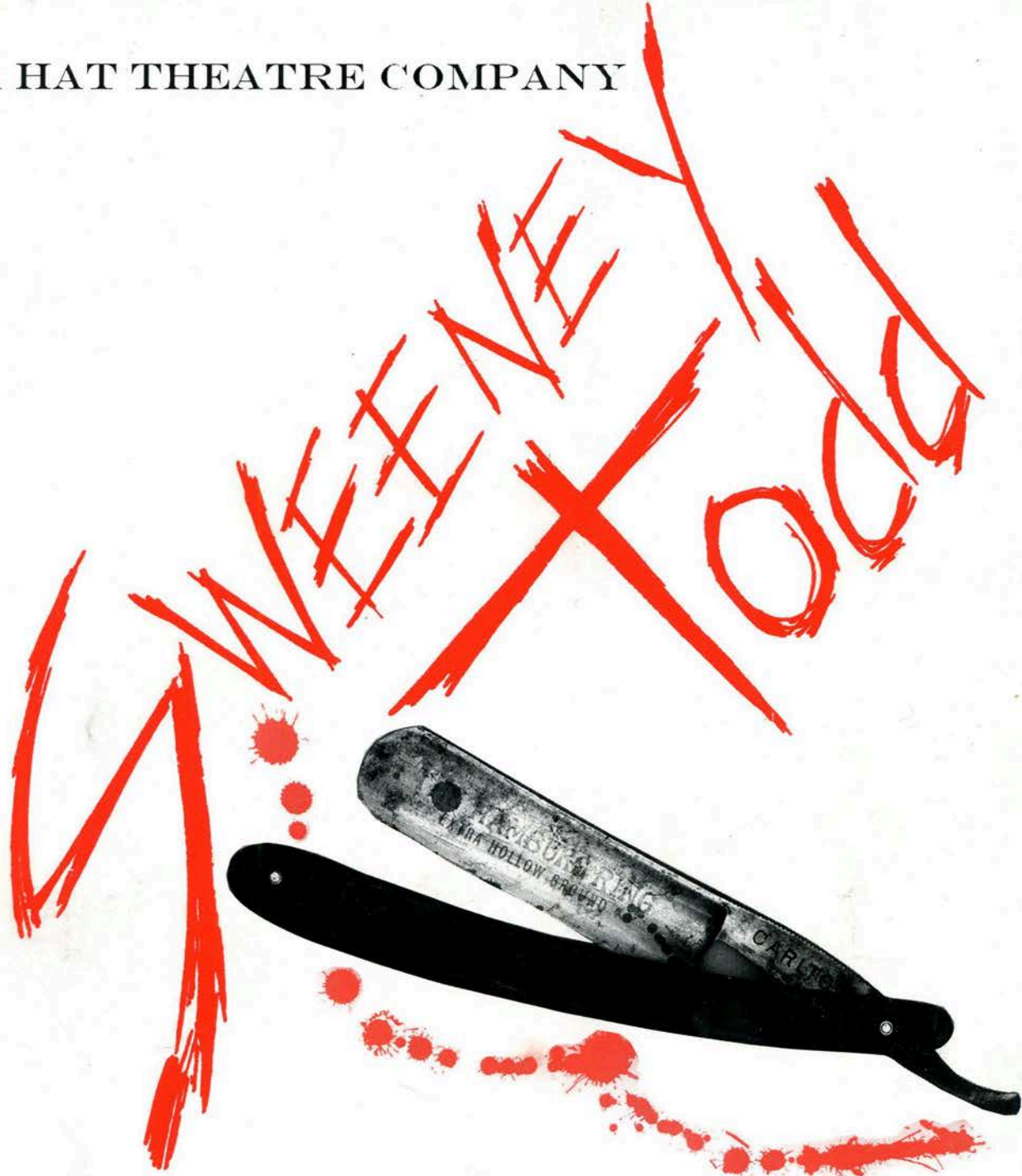


BOWLER HAT THEATRE COMPANY

www.bowlerhat.ie



The Demon Barber Of Fleet Street

Souvenir Programme

**THEATRE ROYAL, WATERFORD
FEBRUARY 28TH TO MARCH 6TH, 2004**

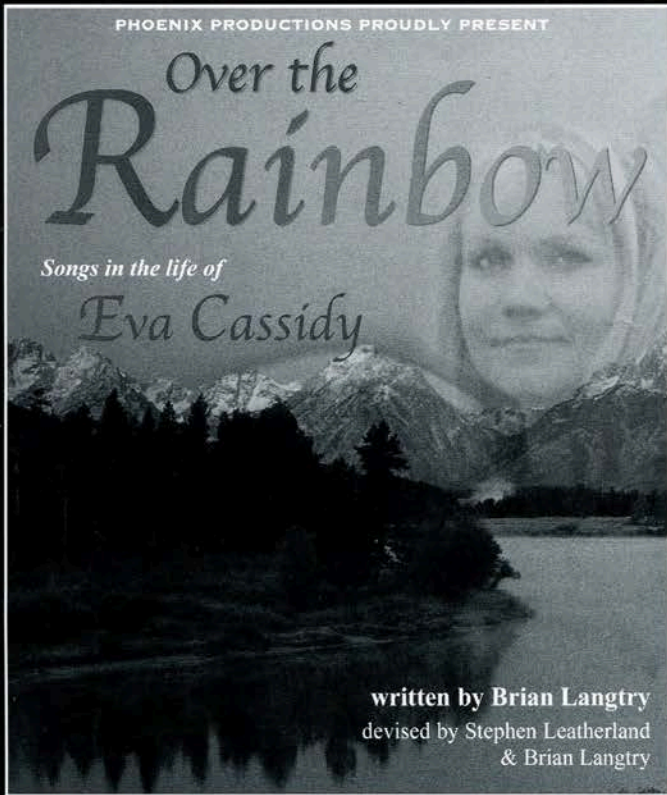
In association
with
ALFIE HALE BARS

In co-operation
with
**WATERFORD CITY
COUNCIL**

A MUSICAL THRILLER

Music & lyrics by STEPHEN SONDHEIM
Book by HUGH WHEELER
From an adaptation by CHRISTOPHER BOND
Originally directed by HAROLD PRINCE
Originally produced on Broadway by Richard Barr, Charles Woodward, Robert Fryer
Mary Lea Johnson, Martin Richards in association with Dean & Judy Manos

This amateur production is presented by arrangement with JOSEF WEINBERGER LTD. on behalf of MUSIC THEATRE INTERNATIONAL of NEW YORK.



Over the Rainbow: Songs in the Life of Eva Cassidy
Thurs 18th March Tickets €20 (Friends of Garter Lane €15)

Mary McEvoy is Shirley Valentine
Thurs 11th - Sat 13th March, 8pm Tickets: €12.50 (Friends of Garter Lane €10)

Todd! The Demon Barber of Fleet Street
Wed 14th April Tickets: €12.50 (Friends of Garter Lane €10)

Garter Lane Arts Centre, 22a O'Connell Street,
Waterford Box Office: 051-855038 Tues - Sat from 12 noon

BOWLER HAT COMMITTEE:

Chairman & Administration

Alan Shanahan

Artistic Director & Founder Member

Liam Butler

Founder Member

Michael Power

Musical Director

Damien O'Brien

Suzanne Kavanagh

Seneiva Magill

Adrian Dower

Mary O'Doherty

CHAIRMAN'S ADDRESS

I'm delighted and honoured to have the privilege of being Bowler Hat's Chairman for this, our fourth major production since our founding less than three years ago. Little did we know how much success we would have when the legendary Liam Clancy helped us launch ourselves as "yet another" theatrical group in the Waterford area, back in October 2001.

"Revenge", the one word capable of summarising the driving force behind *Our Hero's* story. Wronged, he seeks to deal with the man responsible for his plight. And woe betide anyone who gets in his way. The amoral Mrs. Lovett plays her part too, coaxing him, covering for him, aiding and abetting, all the while feathering her own nest and preparing for an idyllic life *By The Sea* with the man of her dreams. Stephen Sondheim puts his own spin on the story of Benjamin Barker, a barber in Victorian London. Complicated orchestration, twisting storylines, offbeat characters and rhythms all contribute to build to a tragic climax, but I'm not going to give anything away. The irony of Todd's first human contact off the ship in the first scene is apparent later in the plot. The "love interest" storyline of the musical, that of Anthony and Johanna, is not overdone in the too often sentimental way other writers flesh out a script. The other love storyline is that of Mrs. Lovett and Todd himself, but it's more of a convenience to the bitter barber, and sometimes helps to provide a useful distraction from his wasted years, biding his time all the while. The corrupt Judge Turpin and his Beadle show their true nature as the story develops. The simple but aware Tobias (Toby) contributes in no small way, as he helps shape the destinies of all around him, Pirelli, Mrs. Lovett and especially Todd. A wonderful and necessarily strong Ensemble reinforce the backdrop to this place and time, and they cannot be underestimated.

Few people are aware of the volume and breadth of work required to bring a show like *Sweeney Todd* to this point. It's a process requiring thankless dedication and effort from (in this case) at least 60 people directly, and immeasurable support from the public, our sponsors, and our "Friends" of Bowler Hat, private sponsors. It's a cliché you've heard a thousand times,

but without them it just would not happen. As an amateur organisation, we extend our gratitude to these people and companies, and we intend to make them proud what they have helped to build. Thankless, no. We thank you all!

Cast, crew, committee, staging, choreography, set designers and builders, musicians, fundraisers, props, costumes, makeup, hairdressers, backstage, front-of-house, theatre staff and management, printers, "colleagues" in other dramatic groups, musical societies and theatres, local media, sponsors (private, corporate and anonymous), local hostellers (you know who you are).

We are proud to be associated with the Lions Club who have helped us to plan the Gala Opening Night on Friday, February 27th, a special fundraising event to benefit the Waterford Association For Mentally Handicapped, an extremely worthy beneficiary. Their respective committees planned the event with speed, efficiency, abundant enthusiasm and an ever-present air of geniality. We look forward to other similar events in future. By the time you read this, we hope word will be spreading of a great night's entertainment, and more especially a successful fundraiser.

Patrons and friends, please sit back and enjoy our portrayal of this dark musical, we hope you will enjoy it even half as much as we will. Let the dripping blood, venomous bile, bitterness and hatred act as a reminder that feelings of vengeance should be kept locked up inside us. Oh, and remember to laugh occasionally too.

Sincerely



Alan Shanahan
Chairman,
Bowler Hat Theatre Company
admin@bowlerhat.ie

Tuscany

49 PATRICK STREET

UNDERWEAR FOR
OUTERWEAR

Exclusive Lingerie & Linen
Specialists in Bridal Lingerie



*Prop. Greta Rochford
June Daniels*

49 Patrick Street, Waterford.

Tel. & Fax: 051 879828

Grattan Computers

Web Design • Software • Programming •
Networking & Consultancy

Moolum, Kilmacow,
Via Waterford.

Tel. 051-885088

Fax. 051-885099

Email info@grattancomputers.com

Waterford Web.net

STAY AHEAD OF THE COMPETITION

SELL YOUR GOODS AND SERVICES ONLINE

ENHANCE YOUR CORPORATE IMAGE

EMAIL@YOURCO.COM

FREE CONSULTATION, NO OBLIGATION

SELL TO AN ENORMOUS ONLINE MARKET

info@waterfordweb.net
www.waterfordweb.net

051-852715

Simplifying The Web

Advice on Finance

23 O'CONNELL ST.,
WATERFORD.

TEL: 051 843440

FAX: 051 843992

Financial Services
We give advice on:

- Mortgages
- Pension Planning
- Business Protection
- Family Protection
- Investment
- Inheritance and Gift Tax

(A Tied Agent of New Ireland Assurance Company plc.)

BIOGRAPHIES



The Demon Barber Of Fleet Street
Liam Bourne AS...

SWEENEY TODD & DIRECTOR

Liam is a Founder Member of Bowler Hat and is the company Artistic Director. Having been on stage performing for more years than he cares to remember, Liam has taken to directing in the last couple of years. He has won 4 awards in the Waterford Festival Of Light Opera, including Best Male Performer on two consecutive years. Liam also has 4 awards from the Association of Irish Musical Societies and 11 nominations to his credit. He has been lucky enough to have the chance to play some wonderful characters over the years - Tevye in Fiddler On The Roof, Tony in West Side Story, Anatoly and Freddie in Chess, The King in (guess what) The King And I, Mac in Cabaret, Mack in Mack And Mabel (no relation to Mac), Judas in Jesus Christ Superstar, Bill Snibson in Me And My Girl, Cervantes in Man Of La Mancha, and as far as we know Liam is the only Irishman ever to have played the character of PT Barnum in the musical Barnum. He says he can retire happy now, once "Sweeney" is done and dusted.



The Demon Barber Of Fleet Street
Mrs. Lovett AS...

MRS. LOVETT

Greta trained at the Gaiety School Of Acting. Her theatre credits include Othello, Stags 'N Hens, Petty Sessions and Whale. Musical credits include Grease, Oliver, Chicago and The Hired Man. She made her West End debut in 2000 at the Cambridge Theatre, starring in Andrew Lloyd Weber's The Beautiful Game, with lyrics by Ben Elton. She also played in West End Comes East at the Kenneth More Theatre, and An Evening With Sally Bourne and Guest at the Jermyn Street Theatre. Television credit include The South Bank Show and The Olivier Awards.



The Demon Barber Of Fleet Street
Johanna AS...

JOHANNA

Mary is an 18-year-old student at Ursuline Secondary School in Waterford, and is our youngest principal. She is a very promising Soprano and we hope this is the start of a long musical career for Mary as she plays her first significant stage role as Johanna. A show like "Sweeney" is straight in at the deep end for Mary, but her performances at auditions and rehearsals show her to be a very capable performer and well up to this demanding role. We wish her the very best of luck and she hopes you enjoy the show.



The Demon Barber Of Fleet Street
Anthony Hope AS...

ANTHONY HOPE

Rory Walsh is twenty-four years old and is currently completing his final year of Computer Science in WIT. He is making a welcome comeback to the stage, having previously appeared in Stage Fright's production of Chess and Tramore Combined Schools Whistle Down the Wind in 1996. Rory has been involved in the Waterford music scene for many years and has won several talent competitions locally. In 1999, he was voted Best Male Voice in the Singing Pubs competition. In between rehearsals (and studying!), Rory enjoys a variety of sports and takes part in local triathlons from time to time.



The Demon Barber Of Fleet Street
Judge Turpin AS...

JUDGE TURPIN

Paul has a long and diverse musical and theatrical background. He was involved with Tramore Tops in '92 and '93, and with the winning Waterford Crystal team in the national Tops final in 1994. He played the Clerk in Chicago, Doody in Grease,

Bill Sykes in Oliver, Freddy Trumper in Chess. With the Waterford Musical Theatre he played Jackson in The Hired Man. Also guested in WIFLO with the Galway production of The Hired Man and was nominated for an AIMS award for that. He played Simon on two Bryan Flynn Theatrix productions of Jesus Christ Superstar. Also played the Commander in the World Premier of Pentimenti, later that year travelling to New Hampshire to play for the Irish Cabaret Show there. He was Paudge in The Last Apache Reunion, for WDS. He was John Wilkes Booth in our production of Assassins in 2001. Paul plays guitar for Avalon in his spare time, and is delighted to "attempt" the part of Judge Turpin.



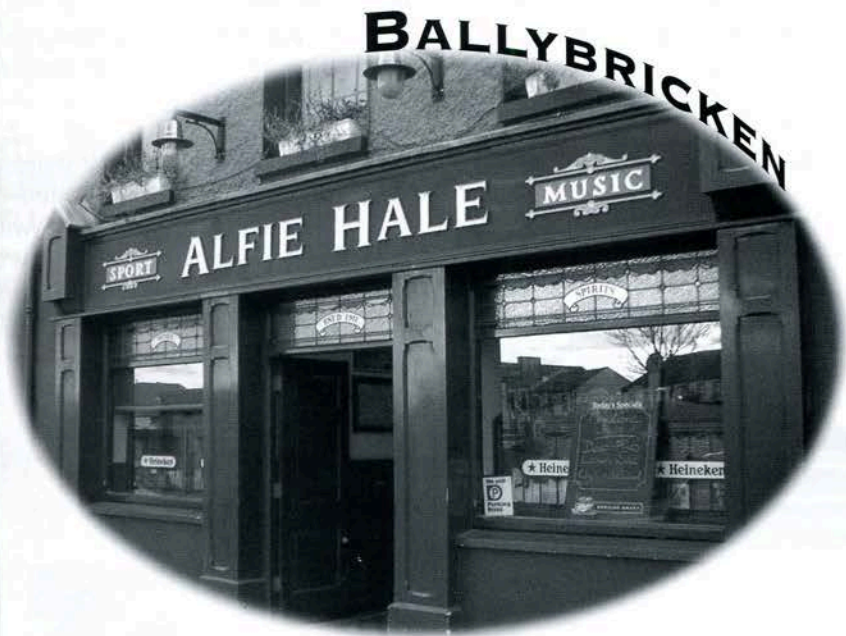
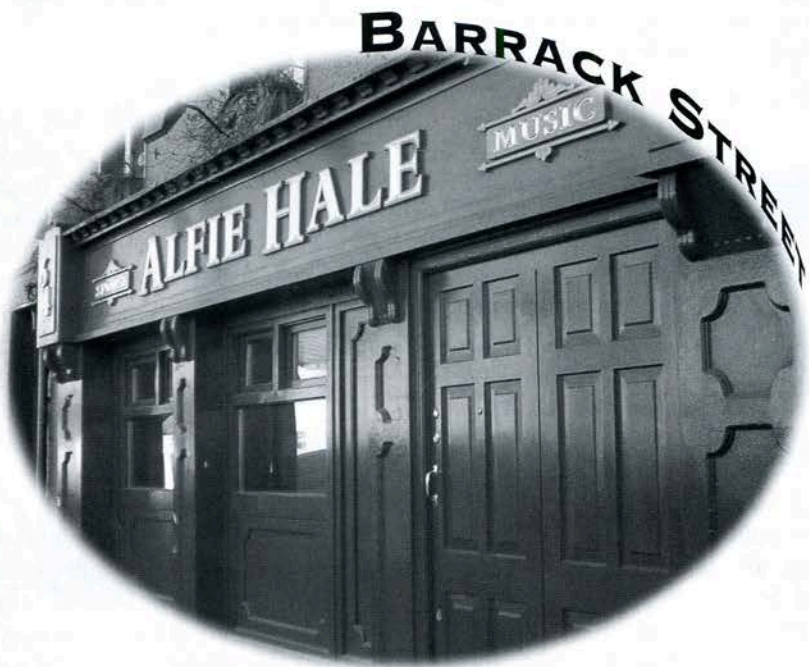
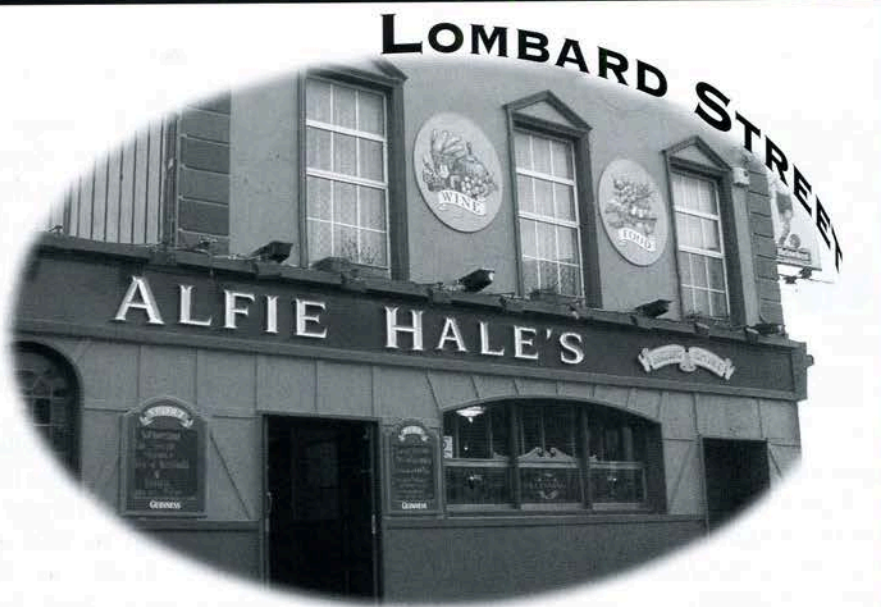
The Demon Barber Of Fleet Street
Beadle Bamford AS...

BEADLE BAMFORD

Tobie has been part of Bowler Hat Theatre Company since our first production, "Assassins". Since then Tobie has taken part in our very successful productions, Musical I-Lumen-Ation and Chess In Concert.

"This will be my third Sondheim show, and it's not getting any easier. Sweeney is a show that doesn't come around very often; it's very exciting to be part of this production, even though musically it's very challenging. As it comes together the sound is terrific. I hope people will enjoy looking and listening as much as we're enjoying performing it."

Tobie enjoys performing in all styles of musicals - last year he appeared as Emile De Beque in "South Pacific" with De la Salle College. For the last night of the WIFLO he played the part of Irving Berlin in "The Melody Lingers On".



ALFIE HALE

Sports and Music Bars
Telephone (051) 875702

BIOGRAPHIES



The Demon Barber Of Fleet Street

GABRIELLE STRONKA AS...

BEGGAR WOMAN

Since moving to Waterford five years ago, Gabrielle has been involved with various musical theatre groups. Roles include "Svetlana" in Chess In Concert, and "Emma Goldman" in Assassins, both with Bowler Hat Theatre Company. Gabrielle is also actively involved with Premier Productions having played "Angel" in The Best Little Whorehouse In Texas, and was cast as "Tess" in Crazy For You. Gabrielle's first appearance on a Waterford stage was "Laurie" in Oklahoma for De La Salle Musical Society. The following year, she played "Sarah Brown" in Guys And Dolls for the same group. In September, Gabrielle performed as a female soloist in Tara Ann Byrne's Irving Berlin concert, specially created for the final night of Waterford International Festival Of Light Opera.



The Demon Barber Of Fleet Street

TOBIAS RAGG AS...

TODD

This is Michael's 4th production with Bowler Hat, having played the part of Leon Czolgosz in Assassins, Molokov in Chess and, most recently, the part of Ted in the highly acclaimed two-man play Urbs Intacta Manet at Garter Lane last year. He has appeared in WDS productions of Philadelphia Here I Come and The Cripple Of Inismaan. On a musical front Michael was part of the award-winning cast of Jesus Christ and Superstar and Oliver, to name just a few. He hopes you enjoy tonight's challenging performance of Sweeney Todd.

realising one of his lifelong ambitions in directing the music of Sweeney Todd, and looks forward to working on some more of his favourite composer/lyricist's work in the future. Some of Damien's best memories in Musical Theatre include his work on the Irish Premier of Whistle Down The Wind, and Chess, both of which he also conducted in the Waterford International Festival of Light Opera, and The Hired Man.

In the recent past he has also found time to compose the score for the Waterford Dramatic Society's production "The Cripple of Inismaan", founded and is Musical Director for the highly acclaimed Choral Group, Lumen, and in November 2003 made his Directorial debut with the Tramore Class Act production of Godspell.



The Demon Barber Of Fleet Street

RAY COLLINS AS...

PIRELLI

Recent work includes "Parchester" in Me and My Girl, "Cheswick" in One Flew Over The Cuckoo's Nest, "Annas" in Jesus Christ Superstar at the Cork Opera House. Ray has featured in two regional Tours with Little Red Kettle Theatre Company. He also created the role of "Fitzpatrick" during the workshop of new Irish musical Seagulls Dance held in St Anthony's theatre, Dublin. Ray has also featured on the original recordings of Seagulls Dance and Pentimenti. Some of Ray's favourite roles include "Nicely Nicely" in Guys and Dolls, "Policeman" in Whistle down the Wind, "Amos" in Chicago, "Sheldon" in Pentimenti, "Simon" in Joseph And The Amazing Technicolour Dreamcoat. He has just finished playing "Claude" in Beauty And The Beast at the Cork Opera House. Ray would like to wish all involved with Sweeney Todd the best of luck for the week.



The Demon Barber Of Fleet Street

JONAS FOGG AS...

TODD

Jamie last appeared in Garter Lane as Tiger Brown in The Threepenny Opera with Rag Doll Theatre Company. A versatile and enthusiastic performer, he has played various roles with a number of companies over the years including the Arbiter in Chess and Zangara in Assassins, both with Bowler Hat. He made the role of "Jimmy" famous in local playwright Pat Daly's two-man show Urbs Intacta Manet, again for Bowler Hat, last April in Garter Lane.



The Demon Barber Of Fleet Street

MARGARET POLLOCK

STAGING & CHOREOGRAPHY

Margaret is an experienced and talented choreographer and has worked with groups, such as Dungarvan Musical Society, Tramore Musical Society, Stage Fright, Bryan Flynn Theatrix and many others. She has appeared onstage in a huge variety of roles in such well-known shows as Jesus Christ Superstar, Chess, Oliver, to name but a few. She says that this is the first time she has worked on a show of this nature, and she's enjoying the challenge. It is her first time being involved with Bowler Hat, and we welcome her and the huge amount of talent she brings with her.



The Demon Barber Of Fleet Street

DAMIEN O'BRIEN

MUSICAL DIRECTOR

Damien has been Bowler Hat's resident Musical Director since the company was founded, working on their productions of Assassins, Musical I-Lumination for the final night of the Waterford International Festival of Light Opera in 2002, and Chess in Concert. As a huge Stephen Sondheim fan he is thrilled to be



KERVICK BROTHERS

39 BALLYBRICKEN, WATERFORD. Telephone 051 - 75281

"IF IT GROWS - WE HAVE IT"

WHOLESALE CASH & CARRY • TRINITY SQUARE, WATERFORD

WISHING BOWLER HAT ALL THE BEST

KERVICK BROTHERS

IF IT GROWS — WE HAVE IT

**** SPECIALISTS IN EXOTIC FRUITS & VEGETABLES ****

**** SUPPLIERS TO HOTELS & RESTAURANTS ****

**** FLORISTS ****

39 BALLYBRICKEN, WATERFORD. TEL: 051-875281

DUNMORE ROAD, WATERFORD. TEL: 051-856215

WHOLESALE CASH & CARRY, TRINITY SQUARE, WATERFORD.

PRESENTING STEPHEN SONDHEIM

Stephen Joshua Sondheim-composer lyricist was born March 22, 1930. He has been writing for the American Musical Theatre for the past four decades. His breakthrough musical *Company*



revolutionised the art form. He is considered by many to be the finest living composer of our time. Most of his melodies are constructed according to

classical principles. Some use the classical ideal of balance. Sondheim uses triadic, diatonic harmony, but it's usually extended, and he'll bring in dissonances for atmospheric effects, to illustrate character or to highlight aspects of the text. His use of counterpoint is the anchor which separates Sondheim from most of today's theatrical composers. The injection of countermelodies to establish themes and motifs within his scores is what gives his works depth. Sometimes tugging at the established harmony of the song, they will take over the melodic structure and advance the piece to the next level. Sometimes they will create tension with the harmony, to create a new melody that may suddenly disappear and reappear throughout the score. Sondheim's melodies for the most part are unpredictable, just when one thinks they know where the melody line is leading, with surprise, Sondheim moves you in a different direction. Sondheim's lyrics are known for their wit, style and appropriate cleverness, for creating multi-dimensional characters, and for advancing the plot. Heavily rhymed and inner rhymed, they provoke thought and are married to the music almost to the point of perfection.

Stephen Sondheim created the scores for *Passion*, *Assassins*, *Bounce*, *Into The Woods*, *Sunday In The Park With George*, *Merrily We Roll Along*, *Sweeney Todd*, *Pacific Overtures*, *A Little Night Music*, *Follies*, *Company*, *The Frogs*, *Anyone Can Whistle*, and *A Funny Thing Happened On The Way to The Forum*, as well as the lyrics for *Gypsy* and *West Side Story*. Side By Side By Sondheim, *You're Gonna Love Tomorrow* and *Putting It Together* are anthologies of his work as a composer. He is on the Council of the Dramatist Guild having served as its President from 1973-1981, and, in 1983

was elected to the American Academy of Arts and Letters. In 1990, he was appointed the first Visiting Professor of Contemporary Theatre at Oxford University and was a recipient of the 1993 Kennedy Center Honors. In 1997 he received the National Medal of Arts Award. In 2000, he was awarded the Premium Imperiale, Japan's highest honour, for a lifetime of artistic achievement. And in December 2002 he received the American Society of Composers, Authors and Publishers (ASCAP) Richard Rodgers Award. In the summer of 2002, six of his shows were presented in Washington, DC as part of The Kennedy Center's Sondheim Celebration.

SWEENEY TODD

*"Attend the tale of Sweeney Todd
His skin was pale and his eye was odd
He shaved the faces of gentlemen
Who never thereafter were heard of again.
He trod a path that few have trod
Did Sweeney Todd*

The Demon Barber of Fleet Street."

"The Ballad of Sweeney Todd" By Stephen Sondheim



Stephen Sondheim
(AP)

In the introduction to Stephen Sondheim's musical thriller *Sweeney Todd, The Demon Barber of Fleet Street*, playwright Christopher Bond begins by telling readers "Sweeney Todd is pure fiction." For two centuries theatre-goers and penny dreadful fans have been thrilled with the exploits of Sweeney Todd, the murderous barber who dispatched his customers with a flick of the razor and then had his lover serve up the remains in a tasty meat pie, but few gave much thought to whether or not it was a true story. Long before there was Freddy Krueger, or even Jack the Ripper, there was the legend of the Demon Barber of Fleet Street, and most readers assumed it was just that - legend. Bond's statement that Sweeney Todd is pure fiction is correct in one respect: the Sondheim musical, which has played to critical acclaim on both sides of the Atlantic, is a fictional account of the life of Sweeney Todd. Sondheim, who penned the music and lyrics, and playwright Hugh Wheeler adapted an earlier work by Bond, who tailored yet another (much) earlier work by one George Dibdin-Pitt. The melodrama by Pitt had its foundation in a contemporary account of Todd's arrest, trial and execution. Bond asserts while Fleet Street was the home of many

unstable and unsavoury characters over the years, "no one has ever succeeded in finding a shred of evidence as to the existence of a Demon Barber thereabouts." That's why Bond is a playwright, not an investigator.

The Demon Barber Sweeney Todd is the English bogeyman. That character older children call upon to frighten their friends and younger children.



Throat Cut Scene from
the play (TIMEPIX)

Unruly youngsters are cautioned against misbehaving with threats of being attacked by Sweeney and served up in a meat pie. To most people, the

Demon Barber who used a trap door and trick chair to slaughter his clients was the stuff of urban legend. After all, the events connected with his story are almost unbelievable. His exploits prey upon very common human fears: being attacked while vulnerable, and being served up as food or unknowingly consuming someone else. Who hasn't sat in the chair and felt a shiver as the barber or hair dresser takes out that straight razor, sharpens it on the strop and then applies it to the back of the neck? Or taken a bite of a meal and wondered just what was the origin of the hair in the hamburger? So it was for years, as the legend of Sweeney Todd was passed on from generation to generation, people wrote off the story as pure fiction. But most myths and legends have a basis somewhere in truth, and Sweeney Todd is no different. There really was a mad barber, he really did use a trapdoor and straight razor to rob and kill customers, and most did end up as filling for meat pies. Extensive, painstaking research by British author Peter Haining has shown this without a doubt. Todd's life and exploits are not nearly as romantic as Sondheim would have us believe, but then who would pay to see a musical about a psychopathic mass murderer unless there was more to the story?

What follows is the true story of the Demon Barber of Fleet Street. There is little romantic or even melodramatic about the life and times of Sweeney Todd. He was an amoral, bitter man who lusted for money and was not averse to killing to get it.

CAST

Sweeney Todd
Liam Butler

Mrs. Lovett
Greta Rochford

Anthony Hope
Rory Walsh

Johanna
Mary Lynch

Judge Turpin
Paul Kavanagh

Beadle Bamford
Tobie Hickey

Beggar Woman
Gabrielle Cummins

Pirelli
Ray Collins

Tobias Ragg
Michael Quinlan

Jonas Fogg
Jamie Murphy

ENSEMBLE

Donna Roche
Valerie Leahy
Suzanne Rush
Grace Ogle
Sarah Gladney
Eithne O'Toole
Maria O'Byrne
Aoife Hearne
Aoife Walsh
Michael Joseph O'Brien
Fergal Blanchfield
Adrian Dower
Adrian Payne
Jamie Murphy

Mark Rellis
Chris Butler
Lord Lucan

PRODUCTION TEAM

Directed by
Liam Butler

Musical Director
Damien O'Brien

Choreography/Staging
Margaret Browne

Chorus Mistress
Donna Roche

Set Design
Ben Hennessy

Set Construction
Jim Whelan

Sound
Star Systems

Lighting
Aidan McGrath

Technical Operators
Nicola Daly, Sinead Lacy, Dick Sheedy

Costumes
Avril Musgrave & Elaine Tighe

Makeup Design
Ali Murphy

Makeup
Susan Hearne, Yvonne O'Reilly &
Helen Flynn

Hairdressing
Margaret Sage, Sinead Sage

Props
Mary O'Doherty, Aisling
Avitabile, Brendan Hickey

Centre pages sponsored by:

POWER'S CENTRA
DOCK ROAD, DUNMORE EAST

(051) 383202

CENTRA

Production Manager

Alan Shanahan

Programme Design

Alan Shanahan, Mary O'Doherty

Front Of House

Seneiva Magill, Suzanne Kavanagh, Catherine Power, Anne Hetherington, Margaret Dower, Sandra Power, Irene Malone, Therese Kennedy

COMMITTEE

Alan Shanahan, Liam Butler, Michael Power, Damien O'Brien, Suzanne Kavanagh, Seneiva Magill, Mary O'Doherty, Adrian Dower

Finance, Administration, Graphic Design

Alan Shanahan

BACKSTAGE MANAGEMENT**Stage Manager**

Brian "The Juck" Collins

Assistant Stage Manager

Pat "Rolo Biscuits" Hennessy

Backstage CrewKevin "KOK" O'Keeffe
Alan "Ace Ventura" Whelan
David "The Rave" Noack
David "The Hook" Quinlan
David Whelan
Herb
Roy Rogers
One Geezer**ORCHESTRA****Violin (Leader)**

Teresa Costello

Violin

Niall O'Brien

Viola

Deirdre Scanlon

Flute

Aine McCarthy Kent

Oboe

Coral O'Sullivan

Clarinet

Alan Coonagh

Bassoon

David Rhodes

French Horn

Liam Daly

Trumpet

Mark Fitzgerald

Trumpet

Neil Brophy

Trombone

Paul Dunlea

Organ /Celeste

Donncha O'Maidin

Keyboard

Jennifer Bolger

Keyboard

Sinead Dempsey

Percussion

Alan Shanahan

FOR THE THEATRE ROYAL

Administrator & Theatre Manager Eamonn Flavin

Technical Manager

Tony O'Regan

*Centre pages sponsored by:***POWER'S CENTRA
DOCK ROAD, DUNMORE EAST****(051) 383202****CENTRA**

Robert Thompson

Funeral Directors

Estd. 1786

19 Barrack Street, Waterford.

Complete Funeral Service

Funeral Home

Advance Funeral Arrangement Plan

John Thompson B.E., C.E.N.G., M.I.E.I., M.B.I.E

Michael Thompson M.B.I.E

Clodagh Thompson B.B.S.

Tel: 051 874159 Fax: 051 841368

Email: jthomp@iol.ie

www.thompsonfunerals.ie



Best of Luck to
Bowler Hat Theatre
Company

Georges Street,
Waterford

CELEBRATING
10 Years in Business



J&B



DIAGEO



GUINNESS

Quervo

BAILEYS

Tanqueray

GALA OPENING NIGHT

WATERFORD LIONS CLUB



The motto of the Lions Club throughout the world is
"We Serve"

In the Waterford Lions Club our aim in serving is to help the less privileged in our area. In serving the community we cater for both young and old. We are indebted to the people of Waterford and surrounding areas for their continued support in our various fund-raising events, particularly our Christmas Appeal.

We take this opportunity to thank Bowler Hat Theatre Company in allowing us to host their opening night of the musical thriller, "Sweeney Todd", as a Gala Night with their proceeds in aid of the Waterford Association for the Mentally Handicapped.

HISTORY OF THE WATERFORD ASSOCIATION FOR MENTALLY HANDICAPPED.

The Association was established in 1960 by Mrs. Mary O'Grady, of Bailey's New Street, Waterford, when there were absolutely no services for people with learning Disabilities.

This great lady started a crèche in The Fanning Institute, (on the site where Government Offices now stands). She and her willing volunteers cared for children with disabilities, who were collected from their homes and looked after in the afternoon and then driven back to their homes. Shortly after this The Sisters of Charity became involved and in a small way without government funding established what are now the three Special Schools in Waterford, The Sacred Heart Unit for

children with severe to profound disabilities, St. Martin's School for children with a moderate disability and St. Joseph's school for slow learners.

1986 saw a crisis in the Health Services when there were severe cut-backs in funding for the provision of any service for children with disabilities leaving school. This was seen as a major problem. Marjorie Hutchinson and Gloria Collins formed a group, the first meeting of which was chaired by Mr. Shanahan, the well know Cork man who did wonders for the Polio Aftercare Association. Out of this he built a huge network of care for young people with disabilities. We were indeed lucky to have him advise us. The meeting produced a committee spearheaded by Kurt Kraus, its first chairman. (Kurt was a Trojan worker and had very good connections in the area of fund-raising).

The first project was the setting up of a small unit for severe and profoundly handicapped adults. These young adults had gone through the schools run by the Sisters of Charity who had left school and were now at home with no stimulation and no activities. The Association provided a small bungalow on the Cork Road, and adapted it to meet the requirements of people with disabilities. The Brothers of Charity and the Health Board saw to its running costs and thus was born Elton Day Care Centre, a huge success.

Next on the agenda was the provision of a workshop for handicapped adults with varying disabilities. A huge fundraising programme was launched, The Lions Club, The Rotary Club and many other generous benefactors contributed to the establishment of what is now Spring Garden Workshop.

This was built on a site provided by the Sisters of Charity - hence the name. Once it was completed and furnished the Health Board was satisfied that it was suitable and provided some funding. The running of this workshop was dependant on Fás workers - what

a lovely bunch of young people came and went. They interacted with concern and love for the Cetraines, as they are now called.

The third marvellous achievement was Robin Hill. Under the chairmanship of Dr. Donie Ormonde funding was sought and provided by the Health Board. This is a Respite Home for adults and children. It is open seven days per week and caters for both children and adults. It accommodates six guests per night, plus a crisis bed to cater for any unforeseen family emergencies. All administration for this service is handled by the Association.

Many other activities include a Coffee Morning on the first Thursday of every month in the Tower Hotel, open meetings for parents and family members and a Summer Camp in August for school children.

The Association is very proud of its achievements to date and has many future plans which unfortunately cannot be established without funding. Any financial support given will be invested in future services for people with learning disabilities and thus enrich the quality of their lives.

THE GRAND HOTEL



TRAMORE

Have a *Grand* Celebration
For all your family occasions

Communion & Confirmations
Christening, Anniversaries
& Birthdays
Wedding facilities for up to
200 people

Watch your favourite teams on
the big screen in *Duffy's Bar*
with Bar Food at weekends

Call Reservations on
051 381414

TRAMORE, CO. WATERFORD, IRELAND
051 381414
www.grand-hotel.ie

JORDAN'S AMERICAN BAR

THE QUAY



***Best of luck to
Bowler Hat Theatre
Company***

Shoe Centre

PATRICK STREET, WATERFORD

Ladies, Gents and
Childrens Footwear

Telephone: (051) 874036

Fax: (051) 850284



ACKNOWLEDGMENTS

Sincerest apologies in advance to anyone who we've forgotten, it wasn't deliberate, and we are very grateful for your help.

(In no particular order)

- Alfie Hale
- Peter, Michael & Tom Fitzgerald, The Munster Bars
- Cranford Construction (Waterford) Limited
- Imelda and Paschal Butler
- Waterford City Council
- Merck, Sharp & Dohme Limited
- Conor Nolan
- Michelle Condon, WLR FM
- Caroline Senior, Garter Lane
- Lilly O'Reilly, Garter Lane
- Geri Oakes
- Frieda Ryan
- The Tower Hotel & Paul McDaid
- Ali Murphy
- Elaine Power, Centra, Dunmore East
- Kilcock Musical Society
- Pine Construction
- Brian Merriman
- Liam Merriman
- David Wray
- Peter Doyle, Waterford News & Star
- Eddie Hearne, Waterford News & Star
- Liam Murphy
- Miriam Chestnutt, Waterford Crystal
- John Palmer Music
- Morris Builders Providers Limited
- Lorraine, Aoife & Gerry at GK Print
- Committee of Waterford Association For Mentally Handicapped
- Committee of Waterford Lions Club
- Natalie Van De Braam
- Jim Myers
- Billy McCarthy, WLR FM
- Geoff Harris, WLR FM
- Eddie Wymberry, WLR FM
- St. John's College, Waterford
- All friends of Bowler Hat
- Michael Power (Collins Avenue)
- Sean and Margaret Dower
- John Power, Photographer
- Waterford Today
- Waterford News & Star
- Munster Express
- Waterford @ 8
- All at Waterford Dramatic Society
- All at Red Kettle
- Alan Weston, City Square Management
- Niamh O'Brien
- Frances & Michael O'Brien
- Royal Liver Assurance Ltd.
- Justine O'Mahony
- Waterford @ 8
- Derek Palmer, Diageo

Best Wishes to Bowler Hat Theate Company
from
Pine Construction, Dublin

**Best of Luck to Bowler
Hat Theatre Company**

from

**Eoins Londis
Kilmacthomas**

Deli - Lotto - Groceries

Proprietor : Eoin Corbett



PPI ADHESIVE PRODUCTS LTD.

**INDUSTRIAL ESTATE
WATERFORD.**

**SELF-ADHESIVE TAPE
MANUFACTURERS**

*Best of Luck to Bowler
Hat Theatre Company
in their production of
"Sweeney Todd"*

Ferrybank Financial Services

For all your Financial Requirements

Mortgages

Insurance

Asset Finance

Life Assurance

Pensions

Personal Accident

Contact: Tony

Phone: 087 2633086 (Mobile)

051 833360 (Office)

Ferrybank Financial Services is regulated by the Irish Financial Services Regulatory Authority.

For just €10 per year you can have priority booking and a mention in all of our production programmes. Also, you'll have that warm feeling of supporting the Arts, and what a worthwhile way to spend your money.

Thank you all for your support.

Saoirse O'Toole
Maura O'Toole
Brian Brown
Janet Brabazon
Edmund Chesneau
Elizabeth Dowling
William Moran
Geri Oakes
Robbie Oakes
Berna O'Brien
Eithne O'Toole
Wilf Dooley
Rita Shanahan
Thomas Shanahan
Jaimie Dower
Conor McGovern
Margaret Dower
Sean Dower
Darragh O'Sullivan
Andrea Power
Liam O'Shea
Patsy "Moondog" Coady
Mikey "Thunder" O'Brien
Ronan Brazil
Michael Dower
Fergal Blanchfield
Louise Hannon
Anne Hetherington
Maura Whyte
Marie Tully
Niall Blanchfield
Patricia Blanchfield
Martin Morrissey
Joe Holden
Mixer Morrissey
Maurice O'Byrne
Deirdre O'Byrne
Sheila O'Byrne
Maria McAlindon

Pat Carroll
Terry O'Byrne
Mags McInerney
P. McInerney
Josie O'Byrne
Gerry McAlindon
Sonia Fox
Freddy Kervick
Patricia Kervick
Joanne Walsh
Sharon Murphy
Seamus Power
Liz Power
Yvonne Power
Jack Power
Marian Power
Catherine Power
Saoirse O'Brien
Niall O'Brien
Larry Roche
Frances O'Brien
Michael O'Brien
Bill Martin
Kathy Martin
Niamh O'Brien
Katriona Dawkins
Aran O'Brien
Dara O'Brien
Aoife Walsh
seapaddling.com
Cast Of Godspell
Barbara Walsh
Moll's Gang
The Inner Circle
The Elite Group
Ken Browne
Sinead Kennedy
Aoife Healy
Mary Molloy Power

Sandra Power
Conor Power
Kathleen Power
Ned Power
Denis Leahy
Paul Leahy
Brendan Malone
Irene Malone
Patsy Hennessy
Helen Hennessy
Joan Butler
Sean Quinlan
Jean Quinlan
Catherine Nolan
Sylvia Cooney
Alice Hennessy
Michael Gallagher
Betty Kavanagh
Tommy Kavanagh
Michael Kavanagh
Andrew Browne
Frieda Ryan
Elaine Power
Rita Duffy
Mary O'Doherty

To become a Friend, contact any committee member or go to www.bowlerhat.ie/friends.asp and download the form.

The Cutting Company

Hair Design

Lina by *Zeegan*.

Arundel Square, Waterford

REGINALD CABS

3-77077

WATERFORD SHOPPING CENTRE

A 24-HOUR SEVEN DAY A WEEK

TOP CLASS SERVICE

7 & 14-SEATER MINI-BUS AVAILABLE

REHEARSALS

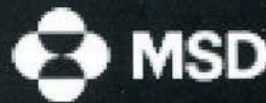


cranford construction Ltd.

51-52 Rathgar Ave, Rathgar, Dublin 6
Tel: 01 491 2333, 491 3124 Fax: 01 491 2334
Email: cranfordconstruction@esatbiz.com



Committed to bringing out the best in medicine



CORPORATE PHILOSOPHY

The corporate philosophy extends beyond the commercial aspects of the business and encompasses safety, environment and the local community.

"We never try to forget that medicine is for the people. It is not for the profits. The profits follow, and if we have remembered that, they have never failed to appear."

George W. Merck

GEORGE W. MERCK (1950)



Merck, Sharp & Dohme (Irl.) Ltd.,
Ballydine, Kilsheelan,
Clonmel, Co. Tipperary.
Tel: 051 601000



wake up with us...



smile with us...



talk to us...



sing along with us...



laugh with us...



drive home with us...



go to bed with us...

We Are First For Waterford

WLR) FM
95.1 / 97.5

www.wlrfm.com